



Customs Act 1901
Notice under Section 15

Boarding Station Appointment
Appointment No. 2540

I, Jeff Buckpitt, delegate of the Chief Executive Officer of Customs, under subsection 15(2) of the *Customs Act 1901*;

- (a) appoint the area known as the **RAAF Air Movements Building Boarding Station, RAAF Base Darwin Airport** in the territory of **Northern Territory** as a boarding station; and
- (b) fix the limits of that boarding station in accordance with the description set out below;

All of that piece of hard standing, being an area of approximately 8.96 hectares and contained by a line commencing at a point which lies approximately 30 metres to the north of the centre of the main Air Movement Terminal Building at a point on the line delineating the limits of the hardstanding at a point (1) Latitude 12° 25' 15.90" South, Longitude 130° 52' 08.00" East; then in a westerly direction for a distance of approximately 30 metres, then continuing initially in a north-westerly direction following the marked line and running parallel to Grandarra Circuit for a distance of approximately 235 metres to a point on the eastern edge of the carpark at a point Latitude 12° 25' 12.35" South, Longitude 130° 52' 00.65" East; then in a northerly direction for a distance of approximately 90 metres; then in a westerly direction for a distance of approximately 75 metres to the north west corner of the hangar building at a point Latitude 12° 25' 09.45" South, Longitude 130° 51' 58.15" East; then in a northerly direction for a distance of approximately 90 metres to a point Latitude 12° 25' 06.50" South, Longitude 130° 51' 58.15" East; then in an easterly direction for a distance of approximately 400 metres to a point on the eastern side of Taxiway C1 at a point Latitude 12° 25' 06.50" South, Longitude 130° 52' 11.45" East; then in a southerly direction and running parallel to the eastern side of Taxiway C1 for a distance of approximately 295 metres to a point Latitude 12° 25' 16.05" South, Longitude 130° 52' 12.05" East; then in a westerly direction for a distance of approximately 36 metres to the western edge of the taxiway; then initially in a west north-westerly direction for a distance of approximately 38 metres; then in westerly direction for a distance of approximately 50 metres to the point of commencement.

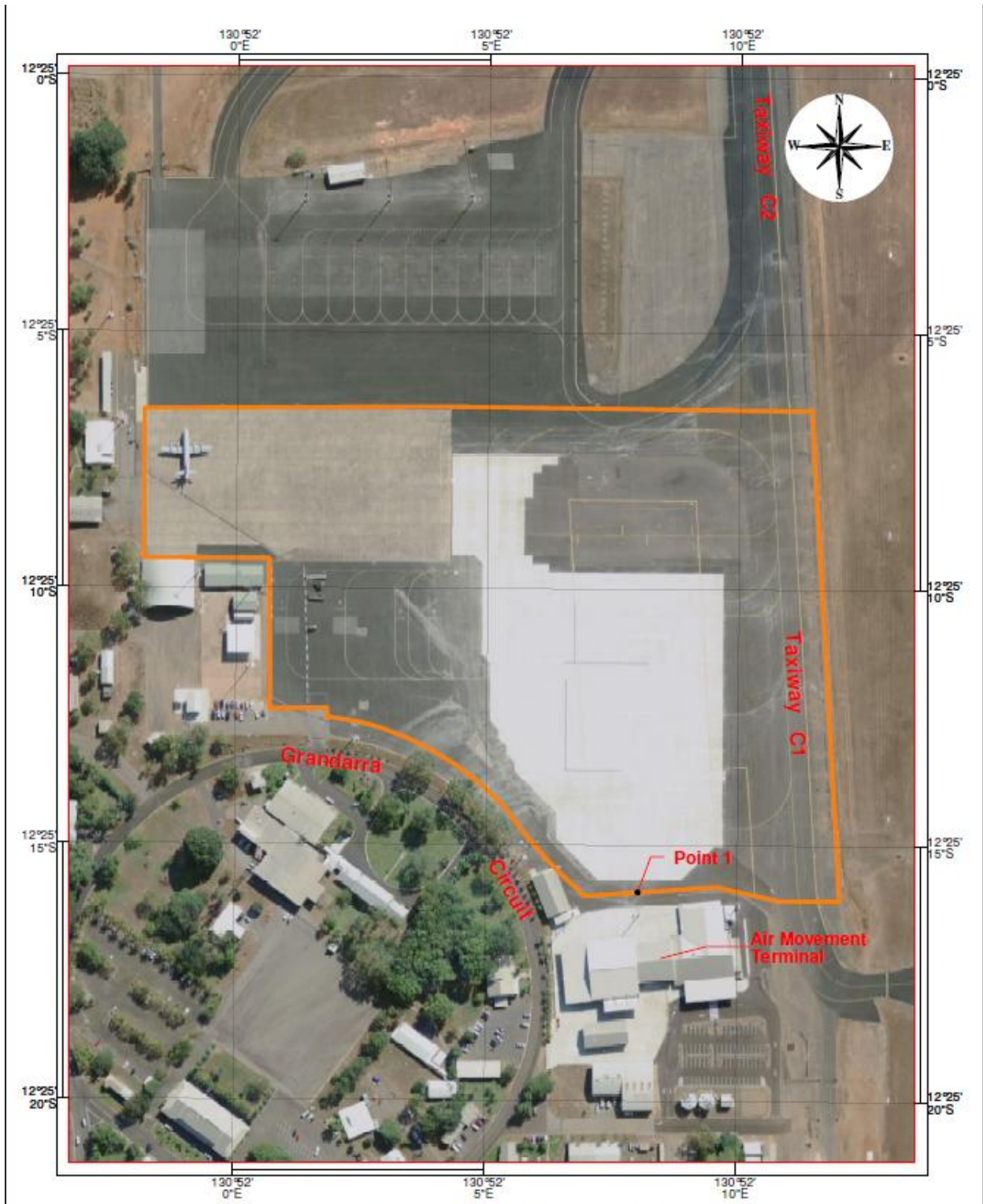
The map below shows an aerial view of these limits.

- (c) Pursuant to subsection 15(3) the **RAAF Air Movements Building Boarding Station, RAAF Base Darwin Airport** is a limited use boarding station for military aircraft only.

Geographic coordinates are referenced to the Geodetic Datum Australia (GDA94, MGA Zone 52).

Dated the 25th day of January 2013

Jeff Buckpitt
National Director
Passengers Division



RAAF Air Movements Building

Boarding Station

Section 15* Boarding Station Limits
 RAAF Base, Darwin Airport
 Customs Proclamation No. 2540

 Boarding Station

Map Number 2012-03, dated 7 September 2012

Approximate Scale 1:3000

