



Australian Government

Department of Infrastructure and Regional Development

Maritime Transport and Offshore Facilities Security Act 2003

NOTICE OF DECLARATION OF SECURITY REGULATED PORT – PORT OF PORT HEDLAND

I, **STEPHEN J WEBER**, Director, Transport Security Operations, Office of Transport Security, under subsection 13(1) of the *Maritime Transport and Offshore Facilities Security Act 2003* (the Act):

REVOKE the declaration of the security regulated port of Port Hedland published in the *Gazette* (C2015G01576 29/09/2015); and

DECLARE that the area of the port of Port Hedland intended for use either wholly or partly in connection with the movement, loading, unloading, maintenance or provisioning of security regulated ships, the boundaries of which are shown on the attached map and descriptions, to be a security regulated port.

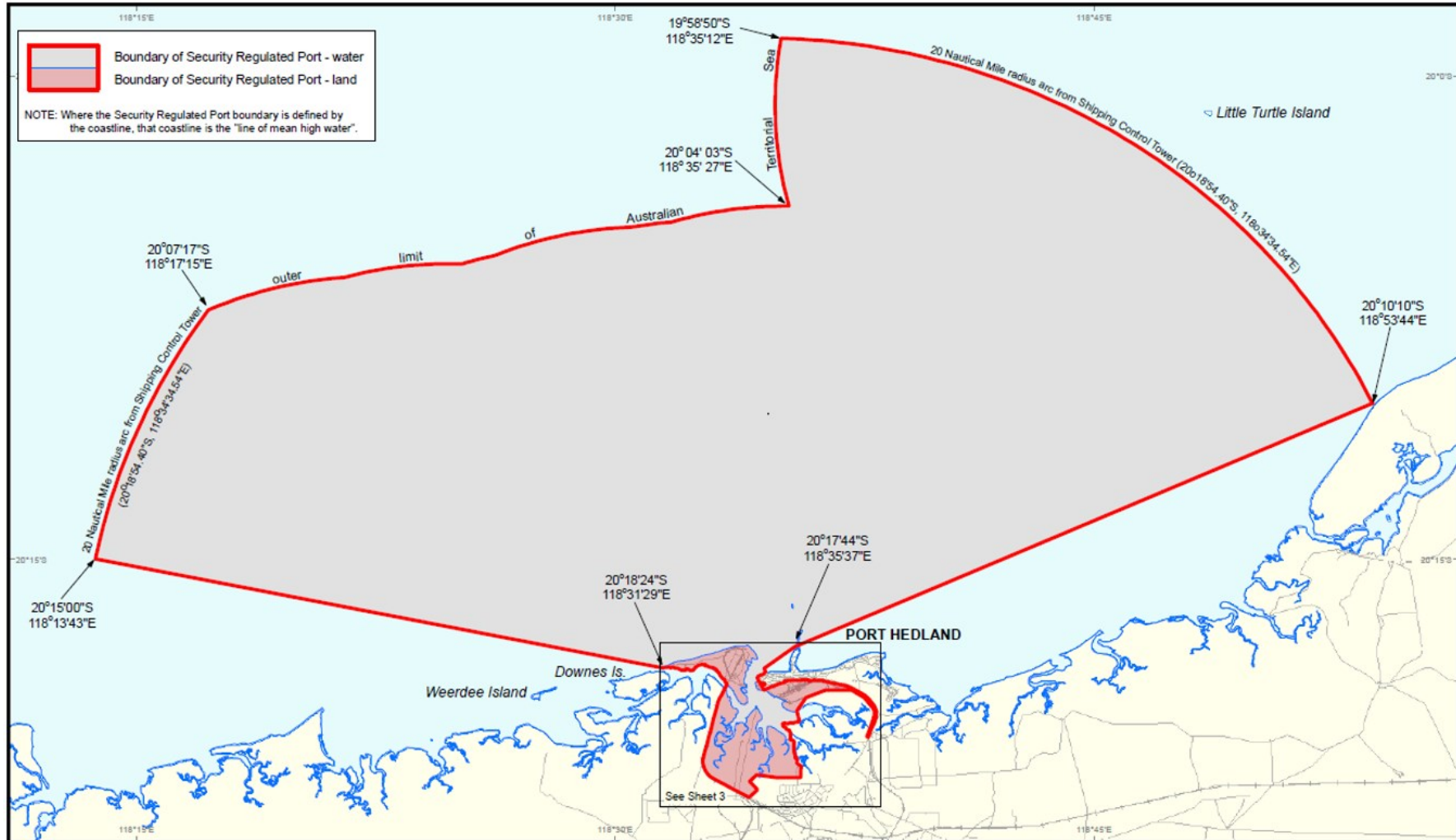
This Notice commences upon publication in the *Gazette*.


Date: 21 July 2017

Stephen J Weber
Delegate of the Secretary of the
Department of Infrastructure and Regional Development

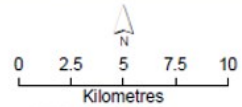
Note:

- 1) *Gazette* means the *Commonwealth of Australia Gazette*
- 2) This Notice remains in force until otherwise revoked in writing and upon subsequent publication in the *Gazette*.




 Boundary of Security Regulated Port - water
 Boundary of Security Regulated Port - land

NOTE: Where the Security Regulated Port boundary is defined by the coastline, that coastline is the "line of mean high water".



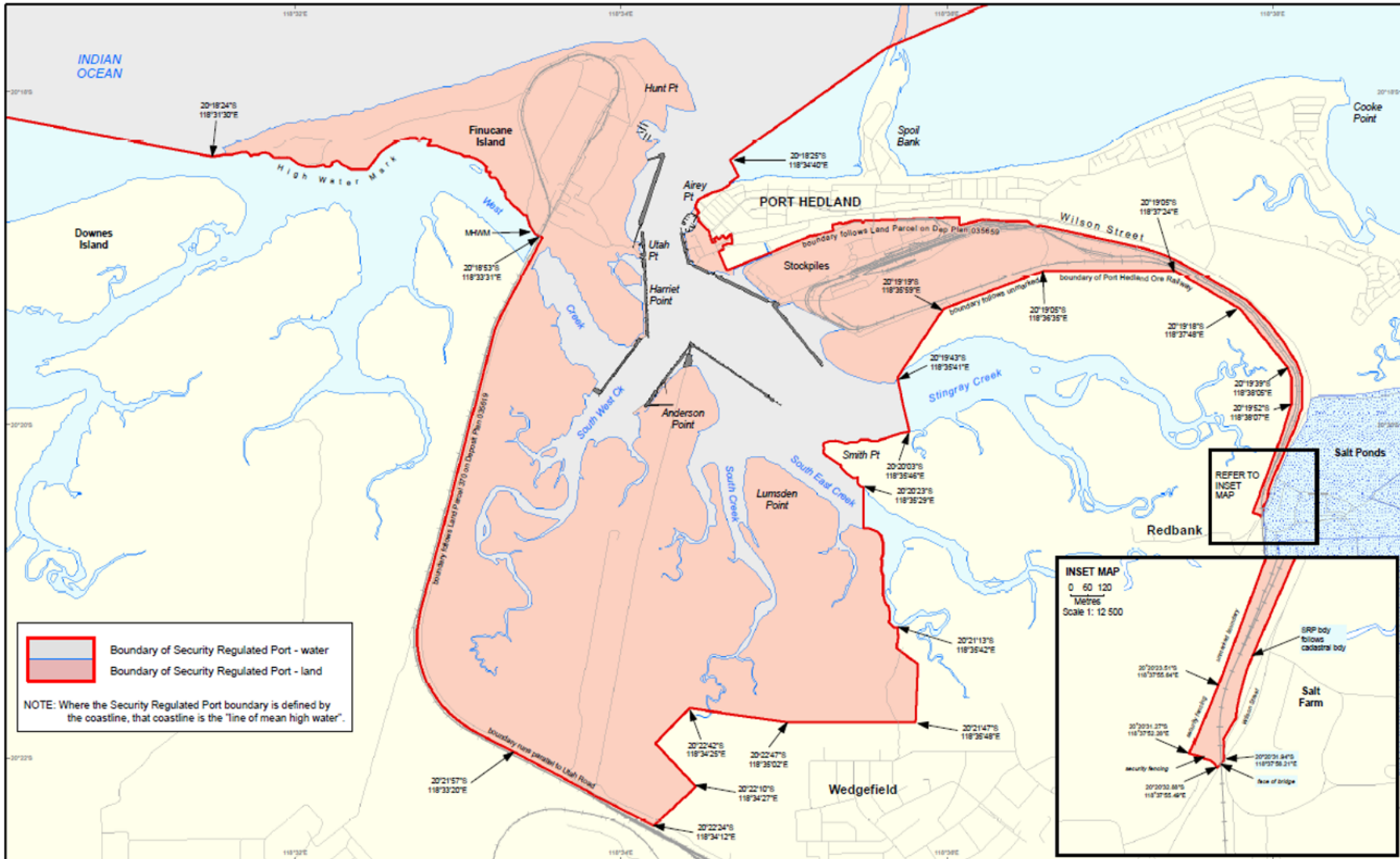
SCALE 1:300,000 (approximate)
 Geographic Projection, Datum GDA94

This map is intended to help clarify the related Security Regulated Port Boundary description. In the event of inconsistency between the written description and the map, the written description prevails.

PORT HEDLAND SECURITY REGULATED PORT BOUNDARY May 2017, Sheet 2 of 4

This map shows the boundaries of the security regulated port for the purposes of the Maritime Transport & Offshore Security Act 2003. This map is not intended for navigational purposes. Further information can be obtained from the Office of Transport Security (OTS), GPO Box 594, Department of Infrastructure and Regional Development, Canberra ACT 2601, or phone the Transport Security Coordination Centre on 1800 307 288.





0 0.5 1 1.5 2
Kilometres

SCALE 1:40,000 (approximate)
Geographic Projection, Datum GDA84

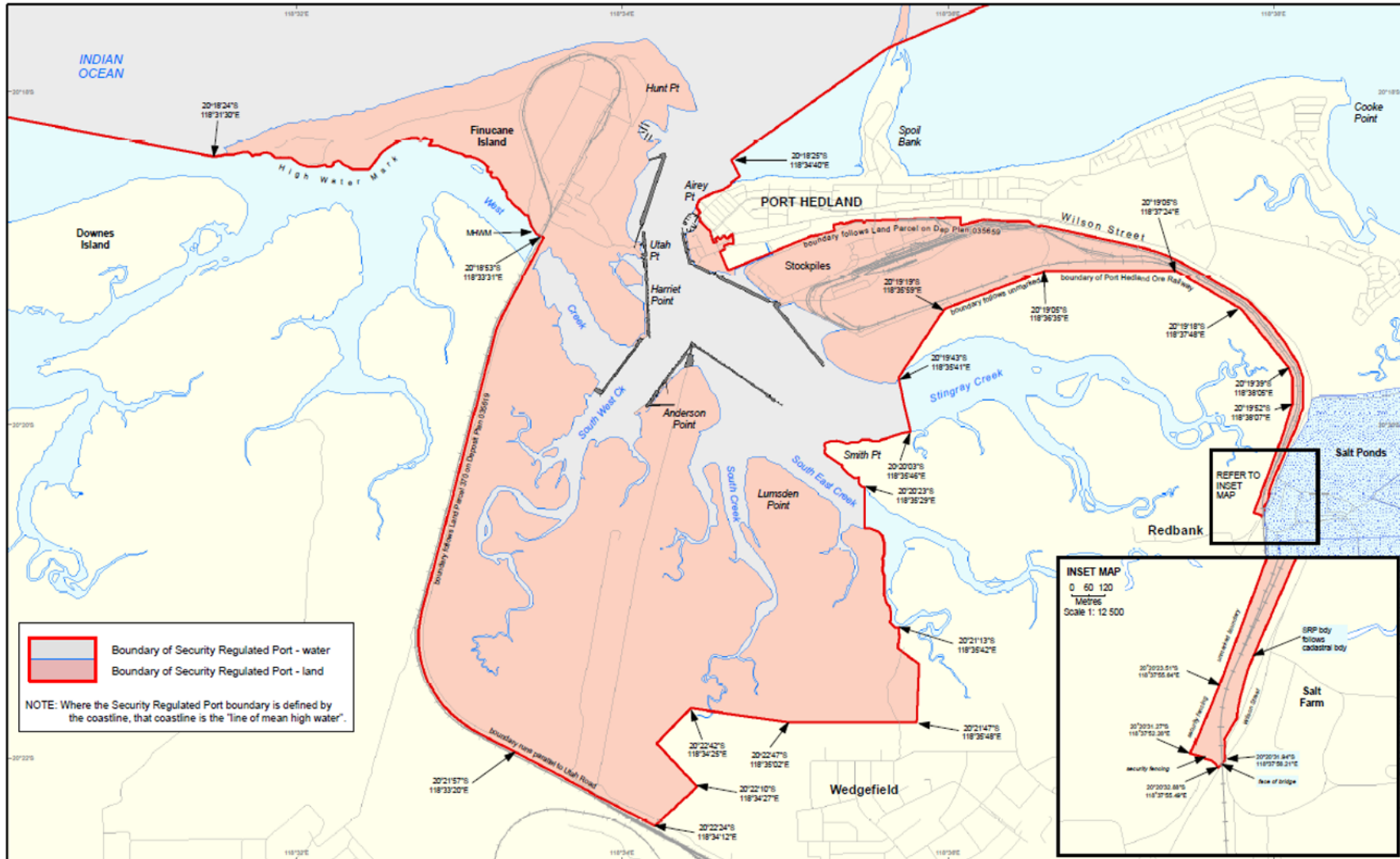
This map is intended to help clarify the related Security Regulated Port Boundary description.
In the event of inconsistency between the written description and the map, the written description prevails.

**PORT HEDLAND
SECURITY REGULATED PORT BOUNDARY**
May 2017, Sheet 3 of 4

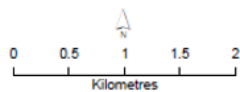
This map shows the boundaries of the security regulated port for the purposes of the Maritime Transport & Offshore Security Act 2003. This map is not intended for navigational purposes. Further information can be obtained from the Office of Transport Security (OTS), GPO Box 594, Department of Infrastructure and Regional Development, Canberra ACT 2601, or phone the Transport Security Coordination Centre on 1800 307 288.



Map ref: PH-026-001-03-03 Port Hedland SRP 3 of 4



Boundary of Security Regulated Port - water
 Boundary of Security Regulated Port - land
 NOTE: Where the Security Regulated Port boundary is defined by the coastline, that coastline is the "line of mean high water".



SCALE 1:40,000 (approximate)
 Geographic Projection, Datum GDA84
 This map is intended to help clarify the related Security Regulated Port Boundary description.
 In the event of inconsistency between the written description and the map, the written description prevails.

PORT HEDLAND SECURITY REGULATED PORT BOUNDARY

May 2017, Sheet 3 of 4

This map shows the boundaries of the security regulated port for the purposes of the Maritime Transport & Offshore Security Act 2003. This map is not intended for navigational purposes. Further information can be obtained from the Office of Transport Security (OTS), GPO Box 594, Department of Infrastructure and Regional Development, Canberra ACT 2601, or phone the Transport Security Coordination Centre on 1800 307 288.



Map ref: PH-Q26-001-03-03 Port Hedland SRP 3 of 4