



NTC-27169

Maritime Transport and Offshore Facilities Security Act 2003

NTC-27169 - DECLARATION OF SECURITY REGULATED PORT – PORT OF BROOME

I am a Delegate of the Secretary of the Department of Home Affairs. Under subsection 13(1) of the *Maritime Transport and Offshore Facilities Security Act 2003* (the Act), I:

REVOKE Notice NTC-16312 which declared the Port of Broome as a security regulated port as published in the *Gazette* (C2019G00593, 05 July 2019); and

DECLARE that the area of the port of Port of Broome intended for use either wholly or partly in connection with the movement, loading, unloading, maintenance or provisioning of security regulated ships, the boundaries of which are shown on the attached maps, to be a security regulated port.

This Notice commences upon publication in the *Gazette*.

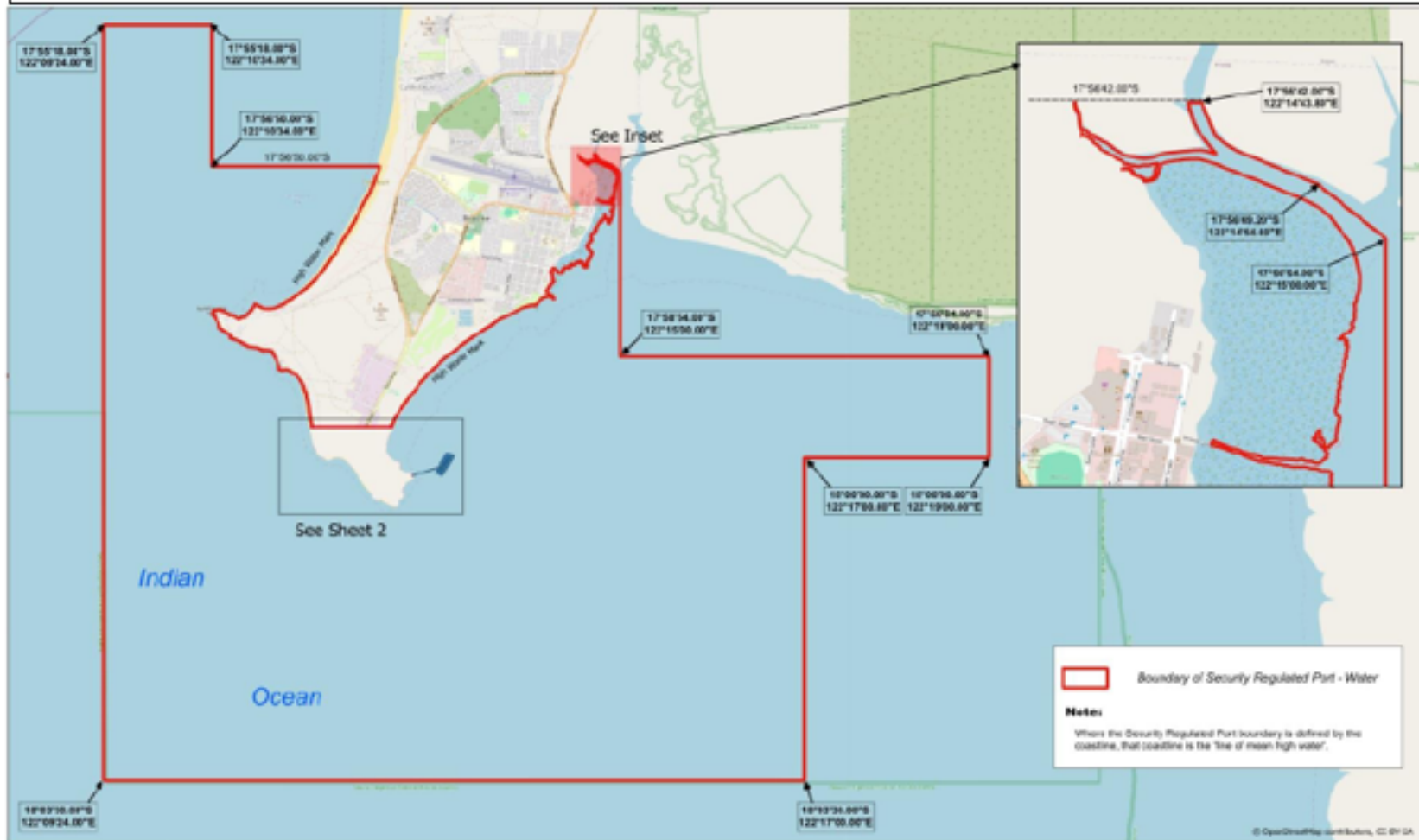
Daniel Panozzo
Assistant Director, Regulatory Operations
Cyber and Infrastructure Security Centre
Delegate of the Secretary of the Department of Home Affairs

17 July 2024

Note:

- 1) *Gazette* means the *Commonwealth of Australia Gazette*
- 2) This Notice remains in force until otherwise revoked in writing and upon subsequent publication in the *Gazette*

This map shows the boundaries of the security regulated port for the purposes of the Maritime Transport and Offshore Facilities Security Act 2003. This map is not intended for navigational purposes. Further information can be obtained from the Department of Home Affairs, Cyber and Infrastructure Security Centre, 6 Chan St Belconnen ACT 2617, or phone 1300 791 581.



Port of Broome
Security Regulated Port Boundary

13 June 2024, Sheet 1 of 2

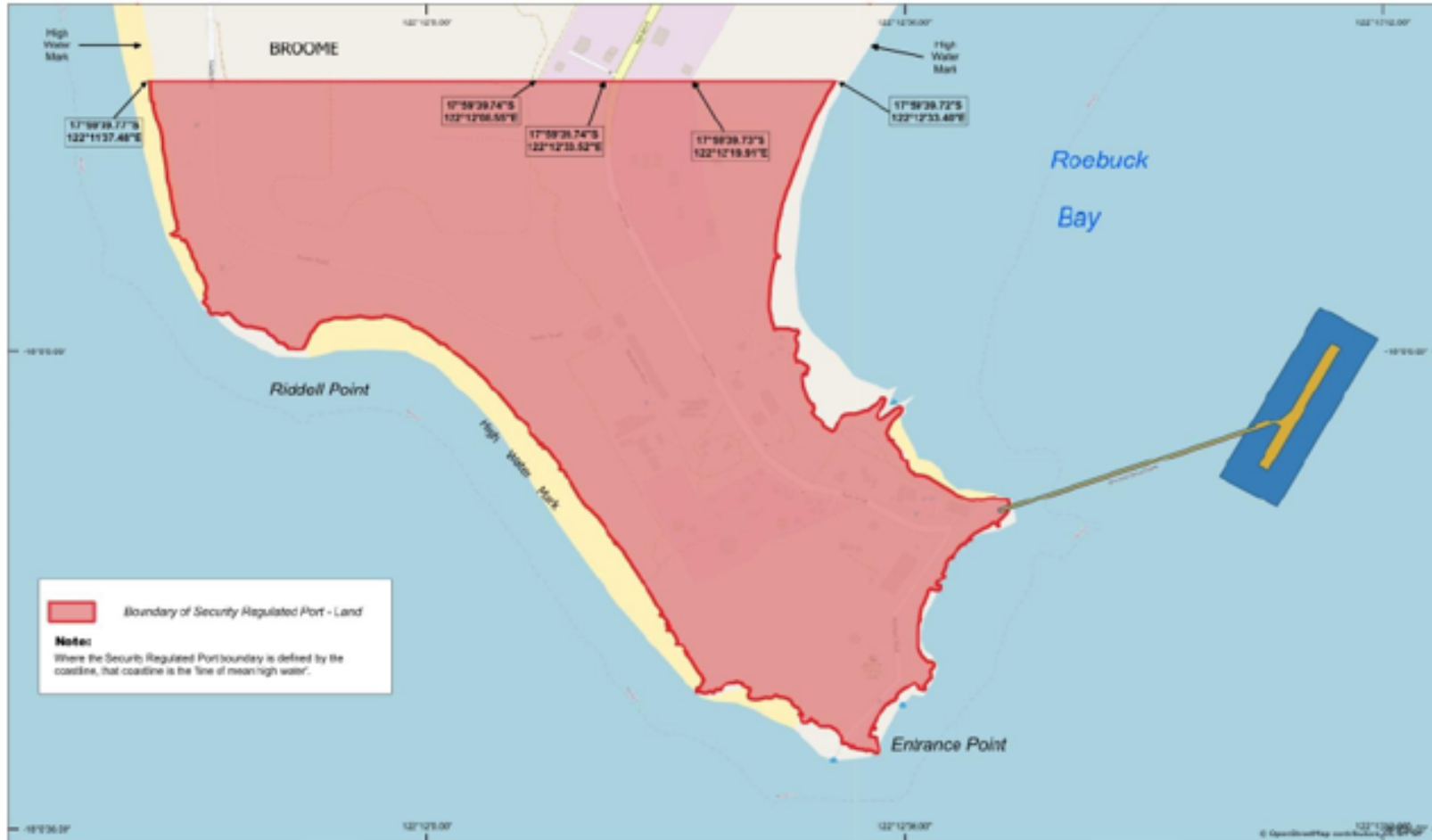
This map shows the boundaries of the security regulated port and maritime security zones for the purposes of the Maritime Transport & Offshore Facilities Security Act 2003. This map is not intended for navigational purposes.

0 1 2 3 4 5 km

Co-ordinate System: WGS 1984 World Merator Geographic Projection
Datum: WGS 1984

Cartographer: Heath Macdonald 0418 526032

This map shows the boundaries of the security regulated port for the purposes of the Maritime Transport and Offshore Facilities Security Act 2003. This map is not intended for navigational purposes. Further information can be obtained from the Department of Home Affairs, Cyber and Infrastructure Security Centre, 6 Chan St Belconnen ACT 2617, or phone 1300 791 581.



0 100 200 300 400 500 m

Coordinates System: WGS 1984 World Mercator
Geographic Projection
Datum: WGS 1984

Port of Broome
Security Regulated Port Boundary

13 June 2024, Sheet 2 of 2

This map shows the boundaries of the security regulated port and maritime security zones for the purposes of the Maritime Transport & Offshore Facilities Security Act 2003. This map is not intended for navigational purposes.

Cartographer: Heath Macdonald 0478 529022