



COMMONWEALTH OF AUSTRALIA

Australian Capital Territory (Planning and Land Management) Act 1988

Acts Interpretation Act 1901

Revocation of Declaration of National Land – Majura Split Blocks

Pursuant to subsection 27(1) of the *Australian Capital Territory (Planning and Land Management) Act 1988* and subsection 33(3) of the *Acts Interpretation Act 1901*, I, KATY GALLAGHER, Minister for Finance, revoke the declaration of National Land made pursuant to section 27(1) of the *Australian Capital Territory (Planning and Land Management) Act 1988* by notice published in:

- the Commonwealth of Australia Gazette No S 76, 2 March 1989 in so far as it relates to the land described in the Schedule below and map on the following page,

Schedule

<i>District</i>	<i>Division</i>	<i>Section</i>	<i>Block</i>	<i>Map/Plan Reference</i>
<i>Majura</i>			<i>52</i>	<i>DP No. 555</i>
<i>Majura</i>			<i>716</i>	<i>DP No. 11277</i>
<i>Majura</i>			<i>717</i>	<i>DP No. 11280</i>
<i>Majura</i>			<i>718</i>	<i>DP No. 11276</i>
<i>Majura</i>	<i>Pialligo</i>	<i>8</i>	<i>2</i>	<i>DP No. 11278</i>

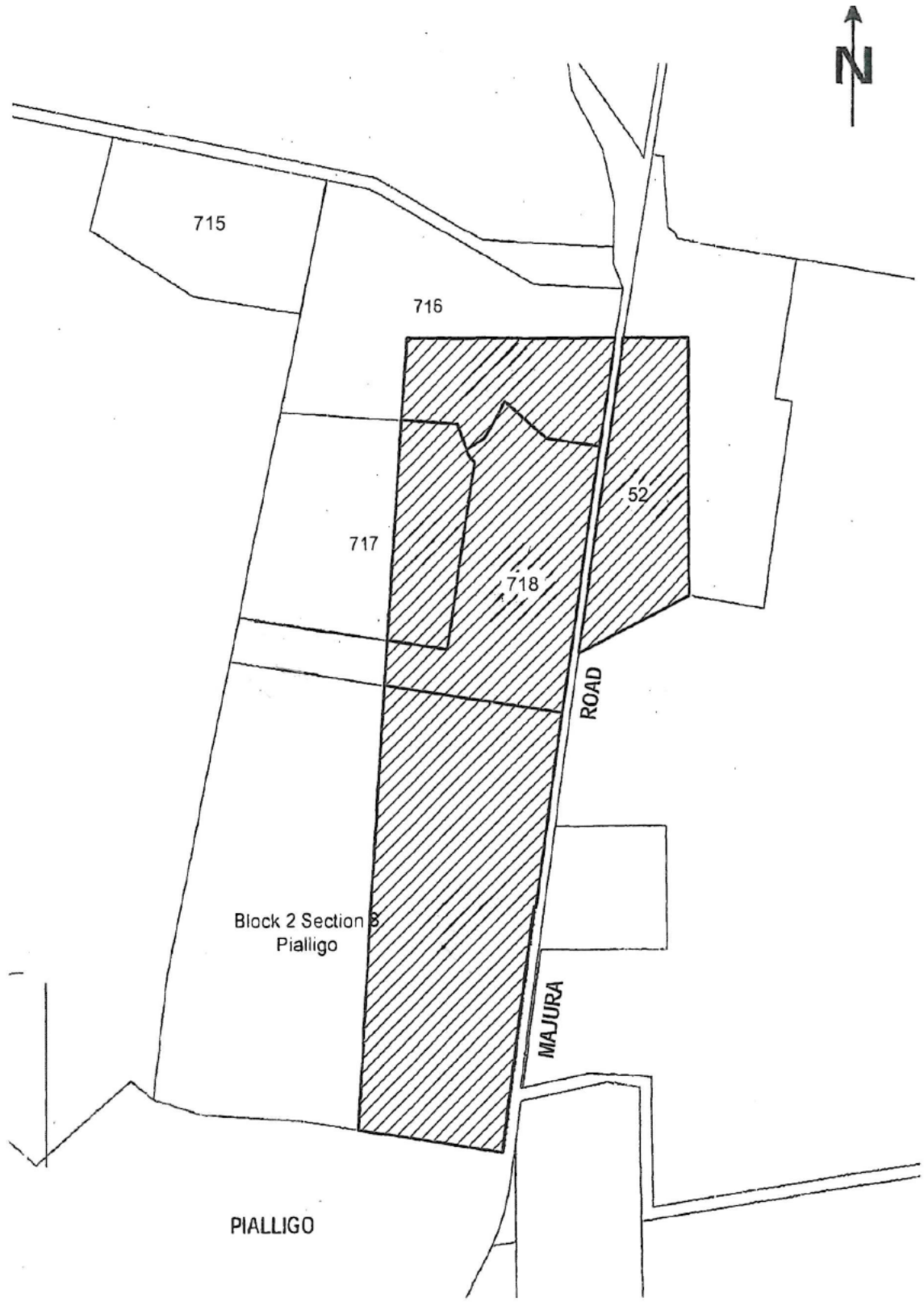
Note: part of the current Blocks 52, 716, 717 and 718 District of Majura and Block 2 Section 8 Pialligo was declared National Land in Commonwealth Gazette No. S 76, 2 March 1989, Map 10.

Explanation of Map/Plan Reference: Deposited Plan (DP) is registered with the ACT Registrar-General's Office.

SIGNED

Minster for Finance

Dated this 12th day of December 2024



DISTRICT OF MAJURA