



Great Barrier Reef Marine Park (Declaration of No-Anchoring Areas —Townsville/Whitsunday Management Area) Notifiable Instrument 2021

I, Joshua Thomas, Chief Executive Officer of the Great Barrier Reef Marine Park Authority (the Authority), acting under paragraph 5(2)(b) of the *Great Barrier Reef Marine Park Regulations 2019* (the Regulations) as delegate of the Authority, and having had regard to the matters in subsection 5(3) of the Regulations, declare that on the date of commencement of the *Great Barrier Reef Marine Park Amendment (No-Anchoring Areas) Regulations 2021*:

1. The *Great Barrier Reef Marine Park (Declaration of Whitsundays No-Anchoring Areas) Notifiable Instrument 2020*, dated 13 July 2020, is revoked; and
2. Each of the areas shown on the maps in Schedules 1, 2 and 3, inshore or enclosed by the no-anchoring area boundary line, is a no-anchoring area for the purposes of the definition of *no-anchoring area* in subsection 5(1) of the Regulations.

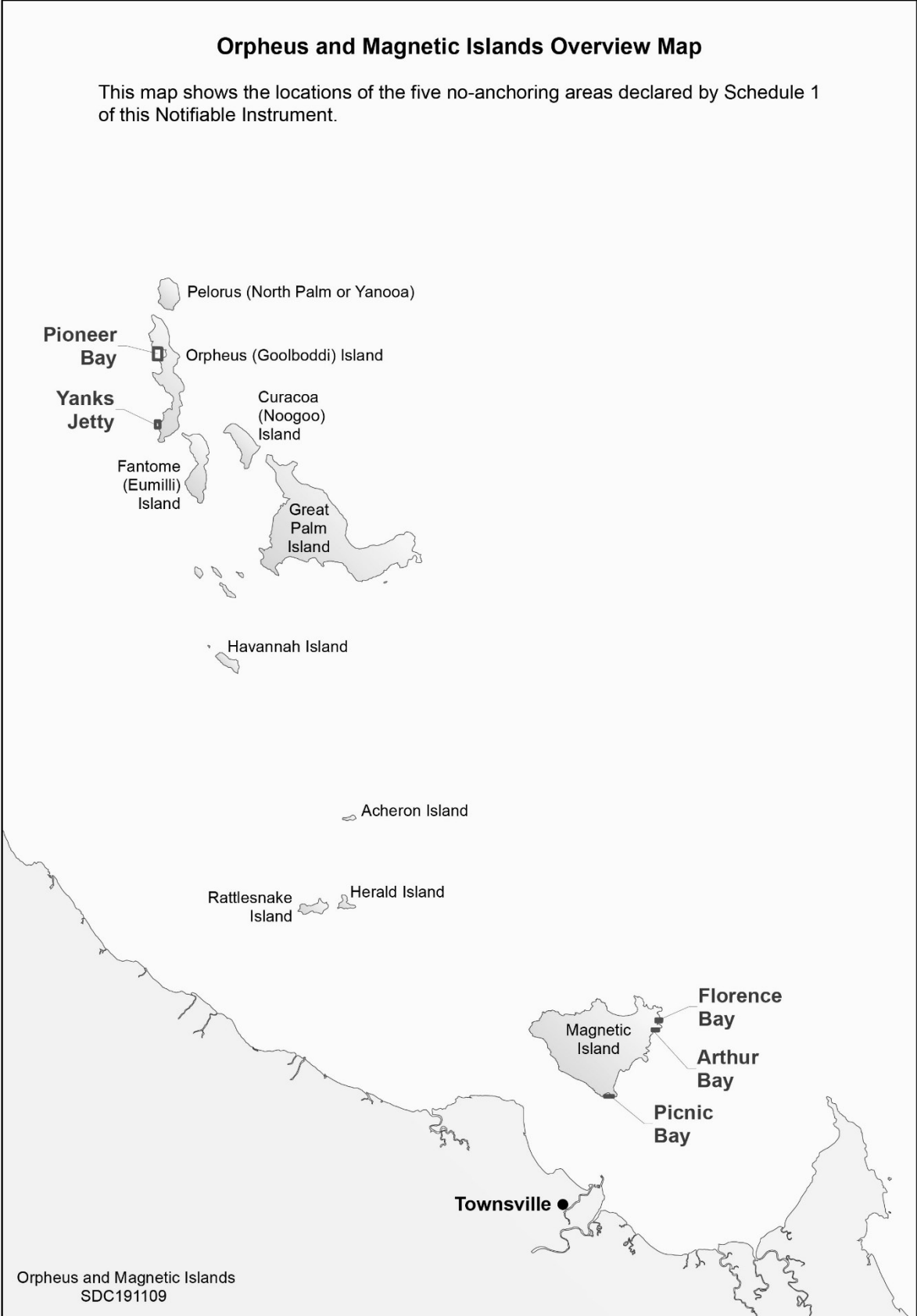
Dated 21 May 2021

Joshua Thomas
Chief Executive Officer
Great Barrier Reef Marine Park Authority

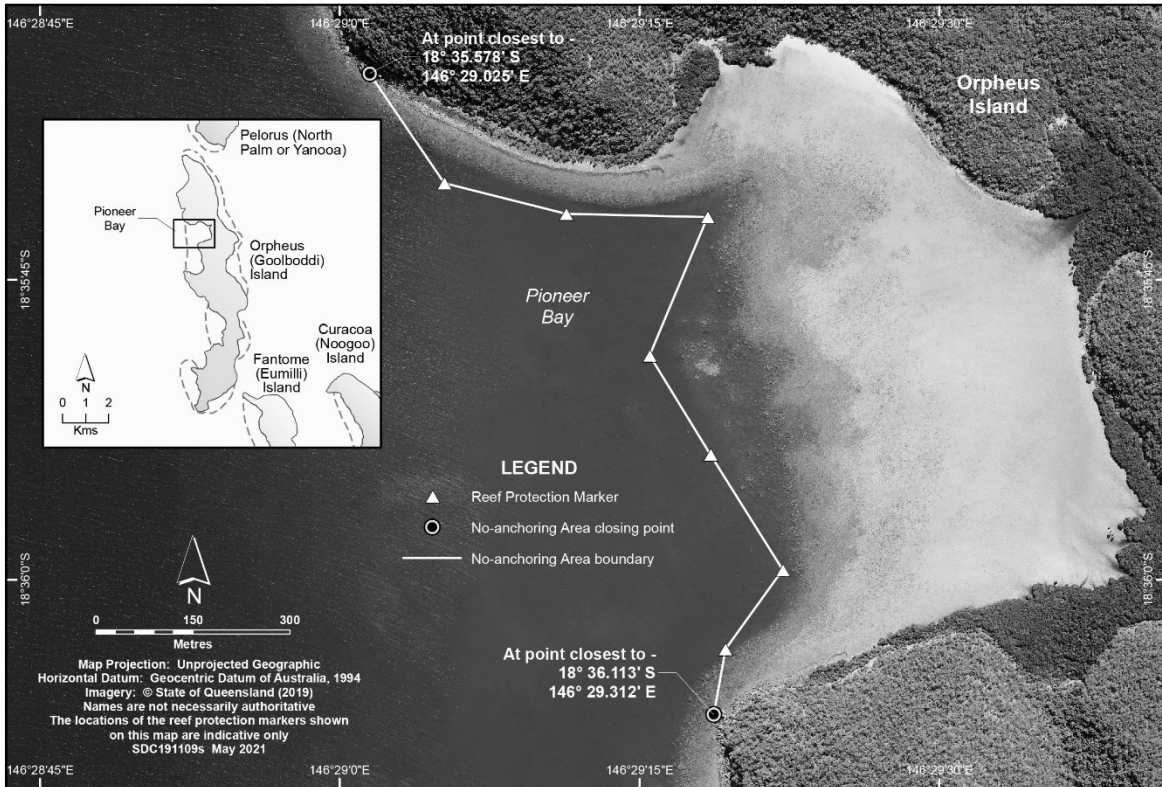
Contents

Schedule 1 — Orpheus and Magnetic Islands no-anchoring areas	3
Overview Map	3
1a — Pioneer Bay, Orpheus Island	4
1b — Yanks Jetty, Orpheus Island	4
1c — Florence Bay, Magnetic Island	5
1d — Arthur Bay, Magnetic Island	5
1e — Picnic Bay, Magnetic	6
Schedule 2 — Bowen no-anchoring area	7
2a — Horseshoe Bay, Bowen	7
Schedule 3 — Whitsunday Planning Area no-anchoring areas	8
Overview Map	8
3a — Bait Reef	9
3b — Blue Pearl Bay, Hayman Island	9
3c — Black Island	10
3d — Langford Island	10
3e — East and West Butterfly Bay, Hook Island	11
3f — Maureen’s Cove, Hook Island	11
3g — Luncheon Bay and Manta Ray Bay, Hook Island	12
3h — Pinnacle Bay, Hook Island	12
3i — Crayfish Beach — Mackerel Bay South, Hook Island	13
3j — Saba Bay, Hook Island	13
3k — False Nara, Hook Island	14
3l — Caves Cove, Hook Island	14
3m — South Stonehaven/ Baird Point, Hook Island	15
3n — Cockatoo Point/ North Stonehaven, Hook Island	15
3o — Cairn Beach, Whitsunday Island	16
3p — Cateran Bay, Border Island	16
3q — Dumbell Island	17
3r — Sunlover’s Bay, Daydream Island	17
3s — Sandy Bay, South Molle Island	18
3t — Chalkies Beach, Haslewood Island	18

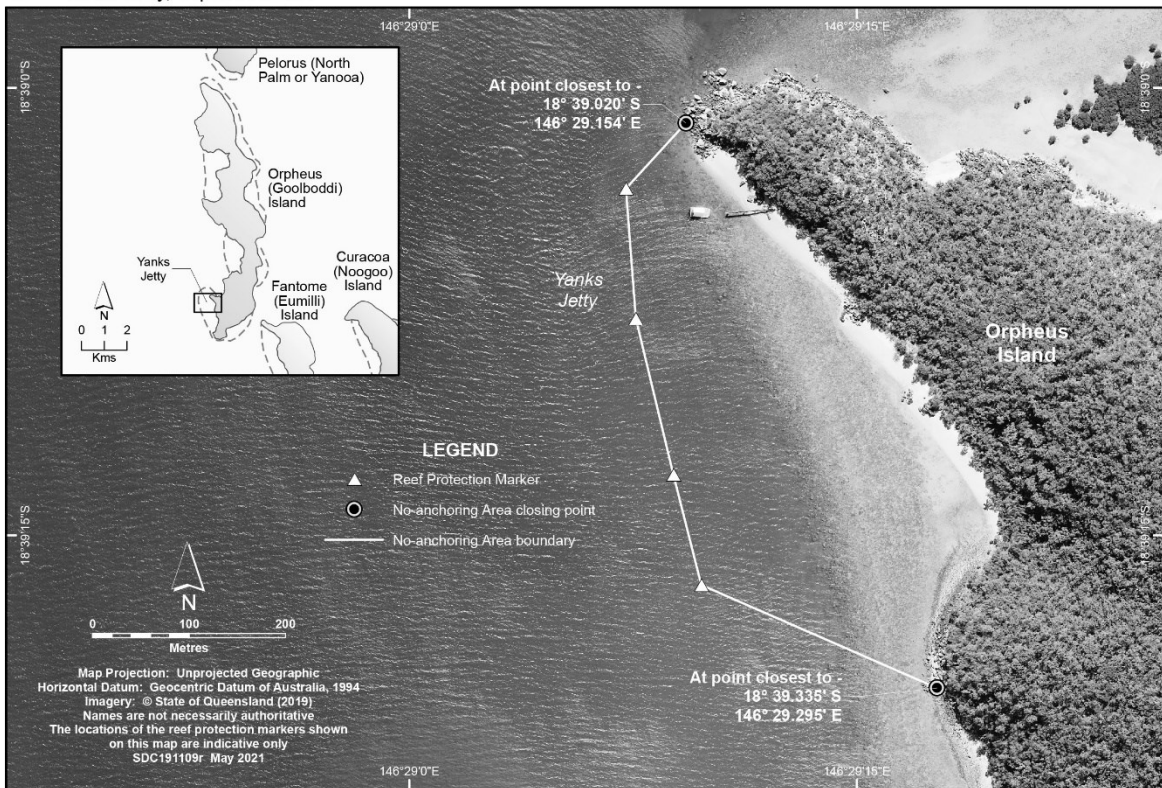
Schedule 1—Orpheus and Magnetic Islands no-anchoring areas



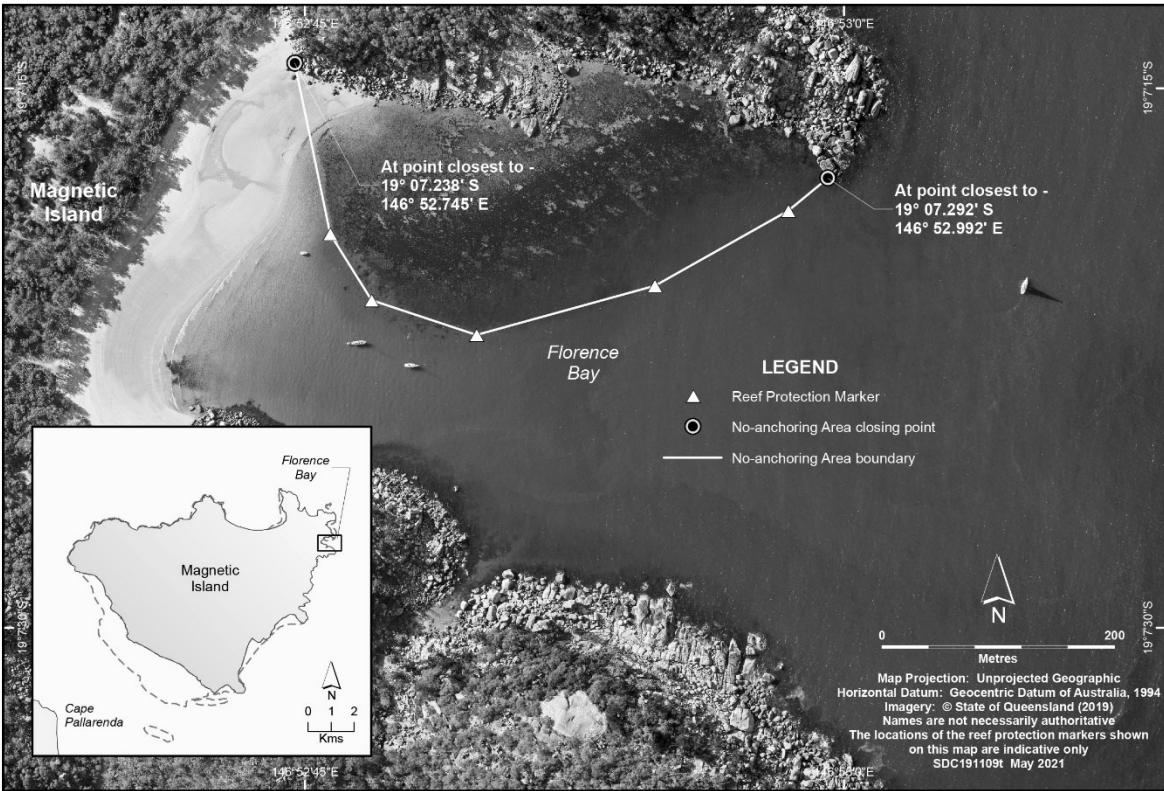
1a — Pioneer Bay, Orpheus Island



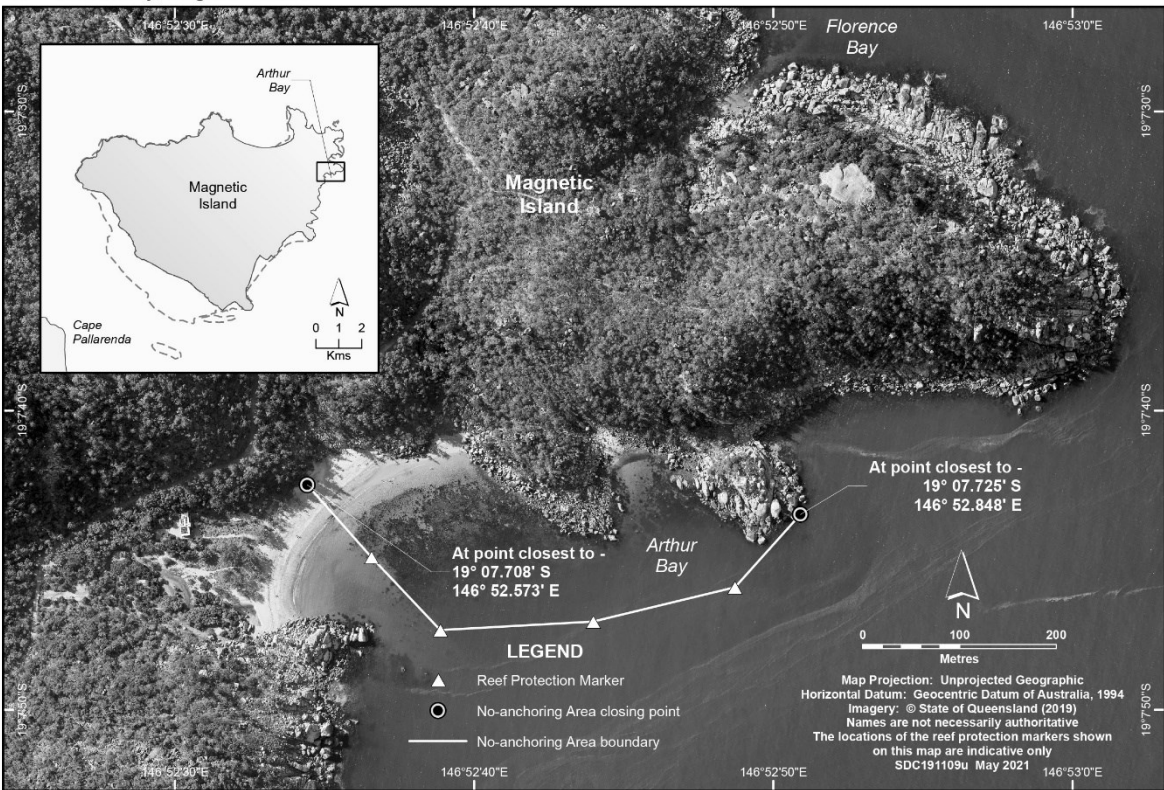
1b — Yanks Jetty, Orpheus Island



1c — Florence Bay, Magnetic Island



1d — Arthur Bay, Magnetic Island

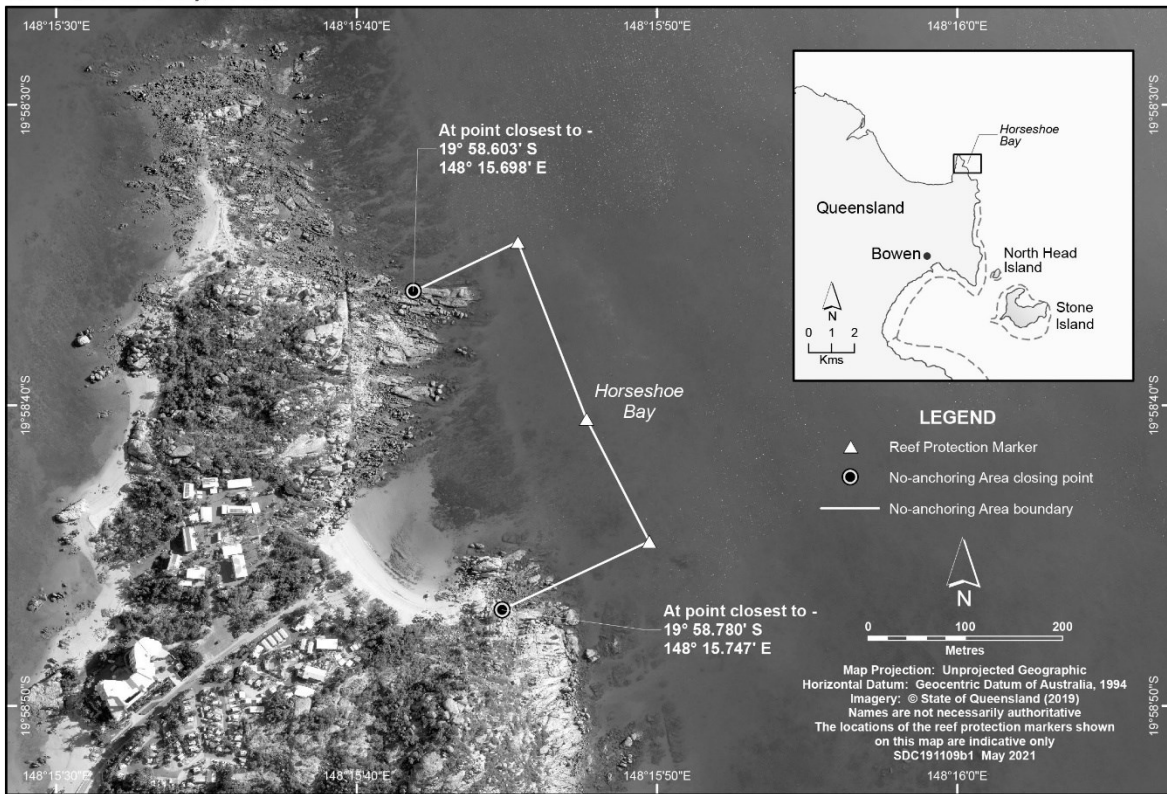


1e — Picnic Bay, Magnetic Island

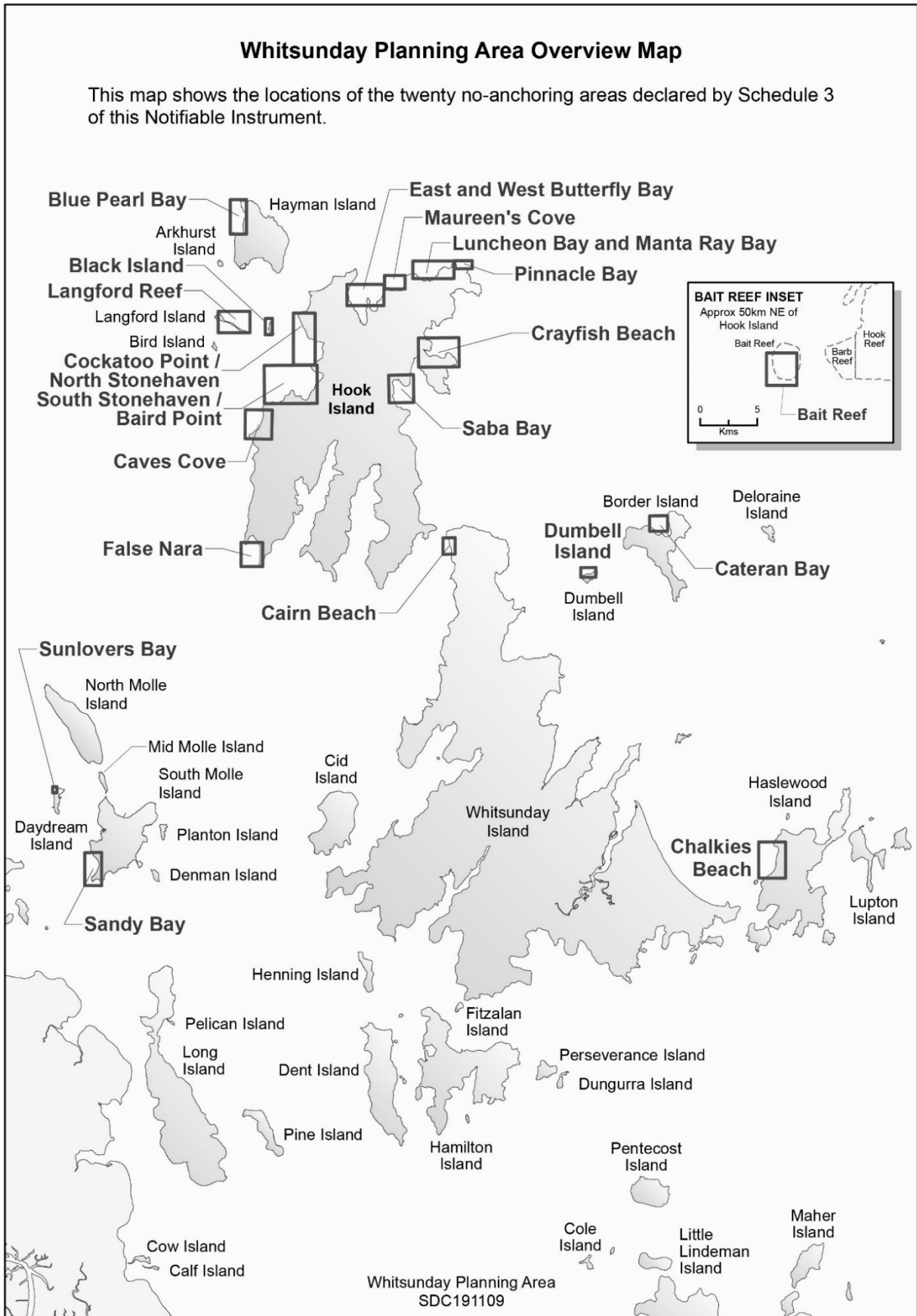


Schedule 2—Bowen no-anchoring area

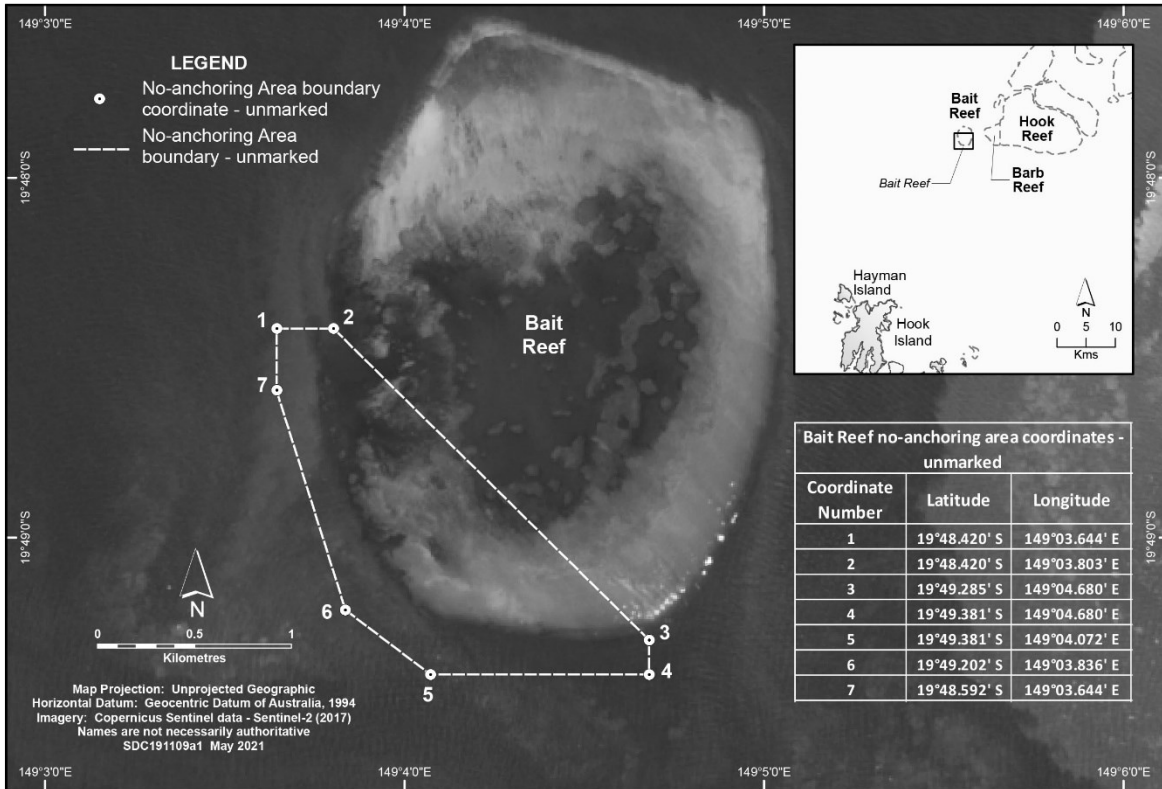
2a — Horseshoe Bay, Bowen



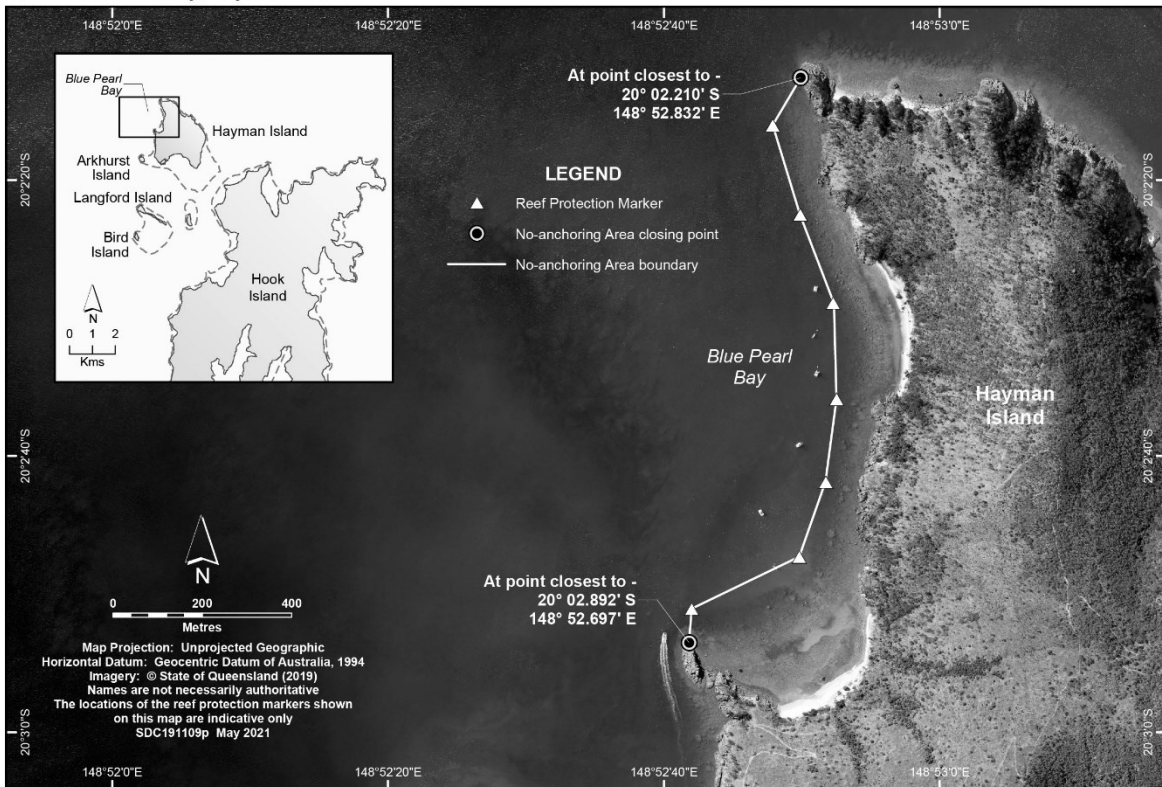
Schedule 3—Whitsunday Planning Area no-anchoring areas



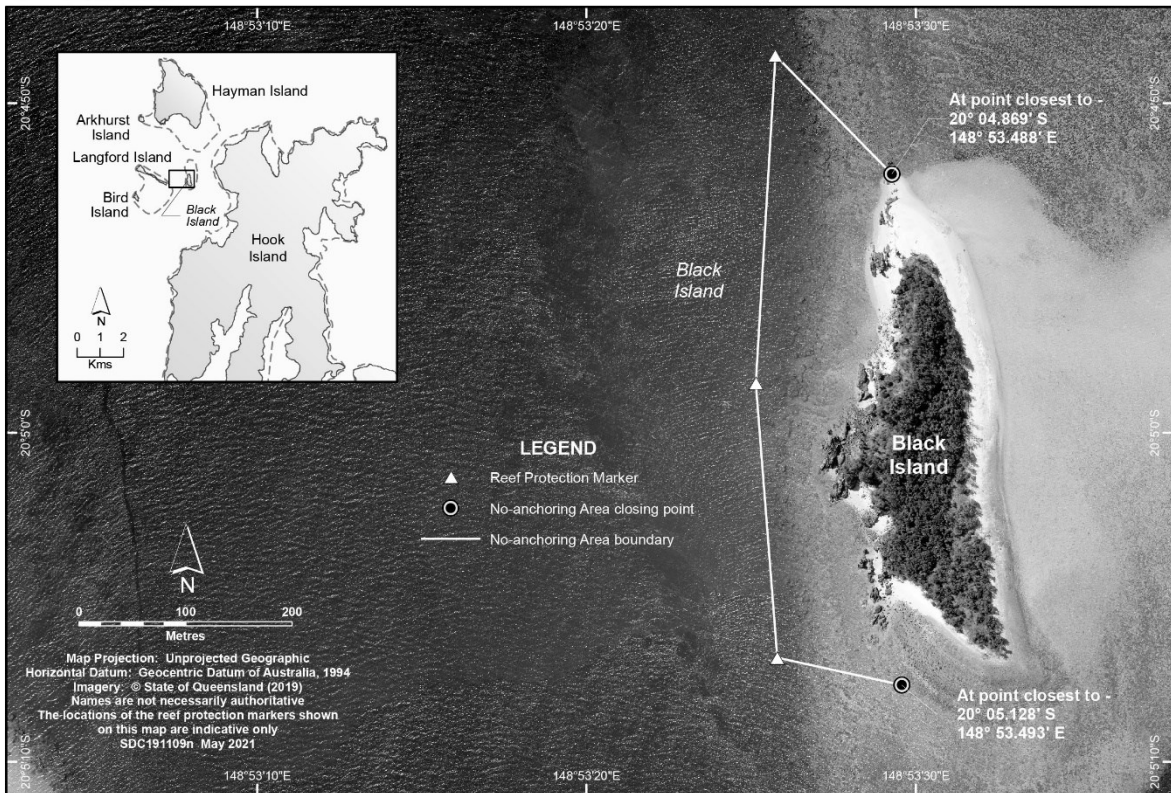
3a — Bait Reef



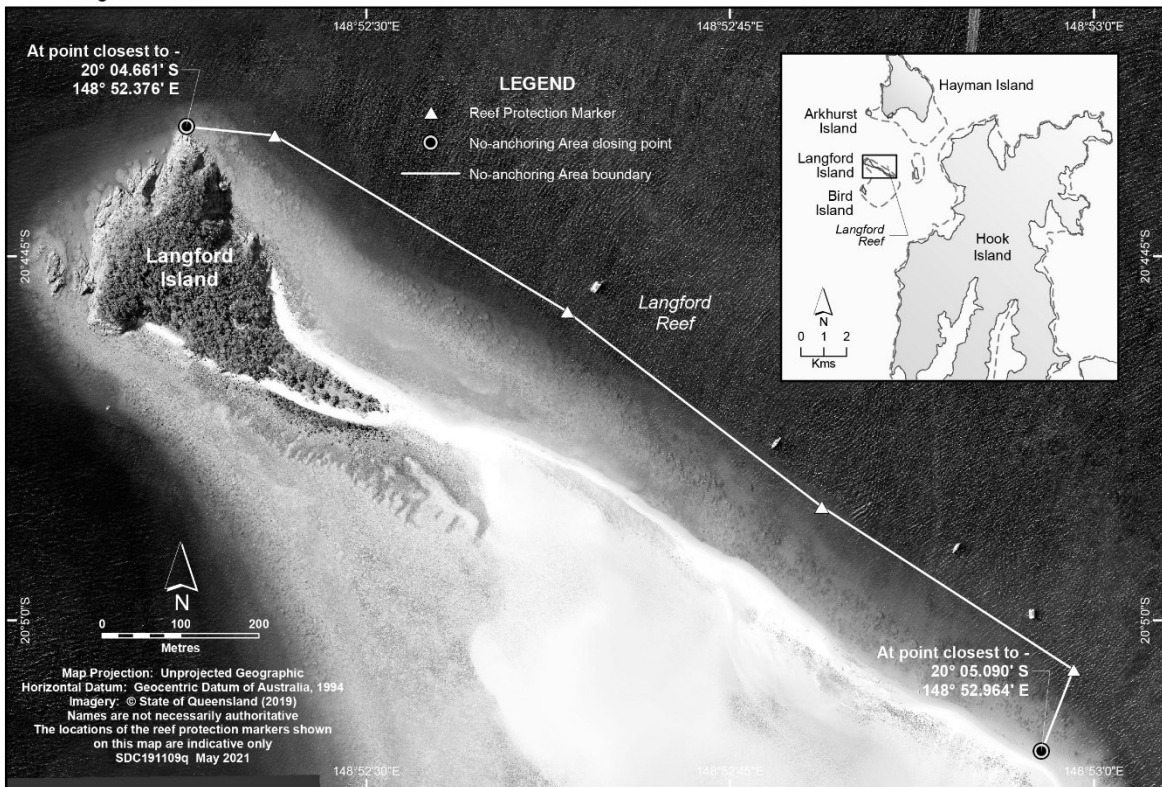
3b — Blue Pearl Bay, Hayman Island



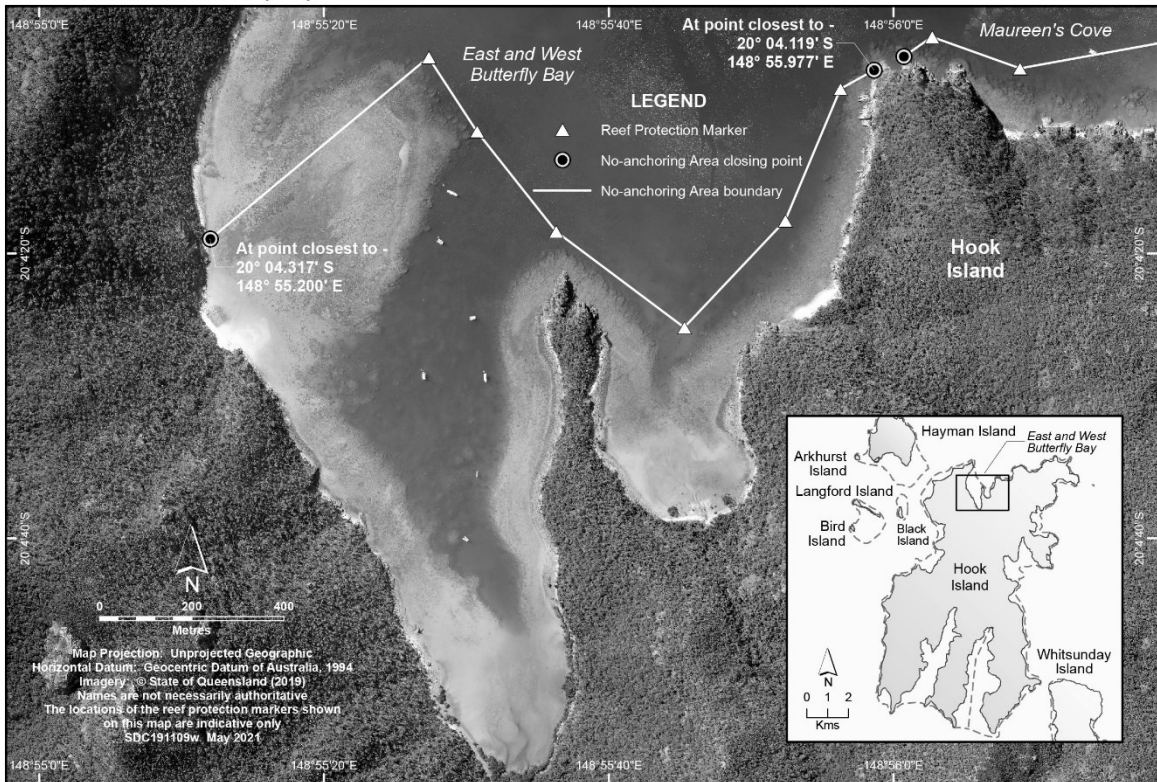
3c — Black Island



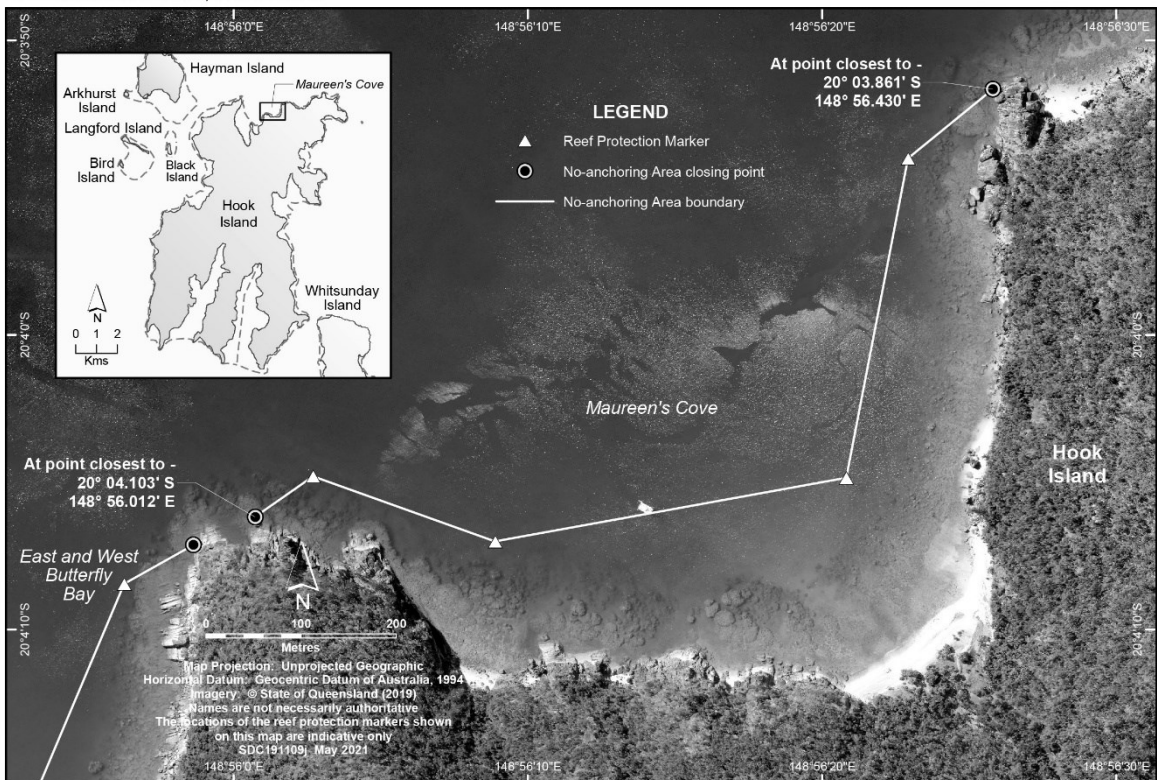
3d — Langford Island



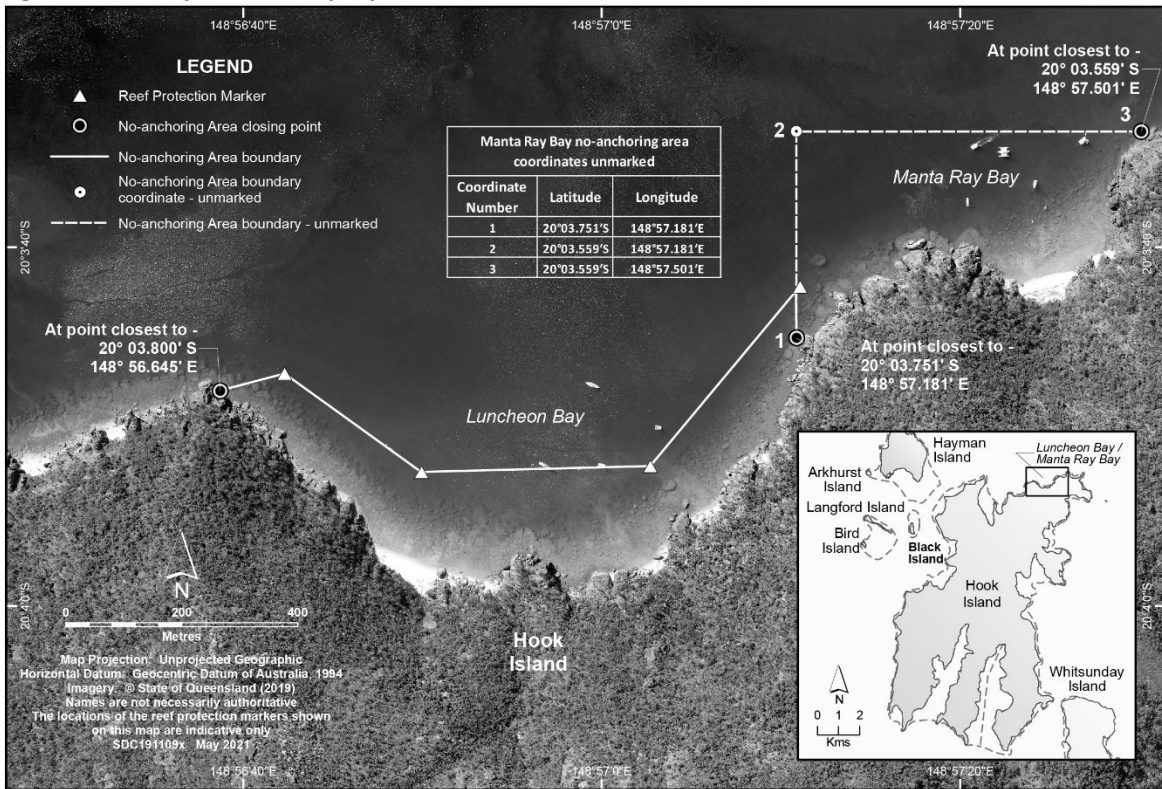
3e — East and West Butterfly Bay, Hook Island



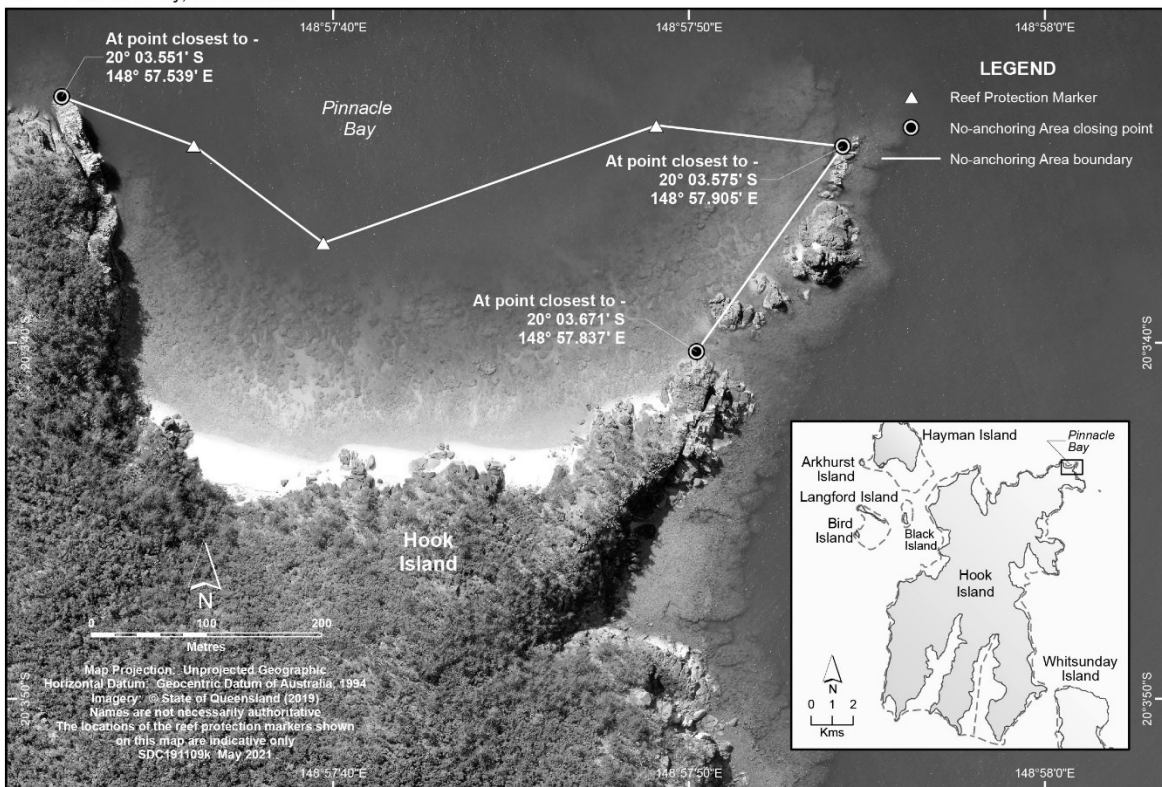
3f — Maureen's Cove, Hook Island



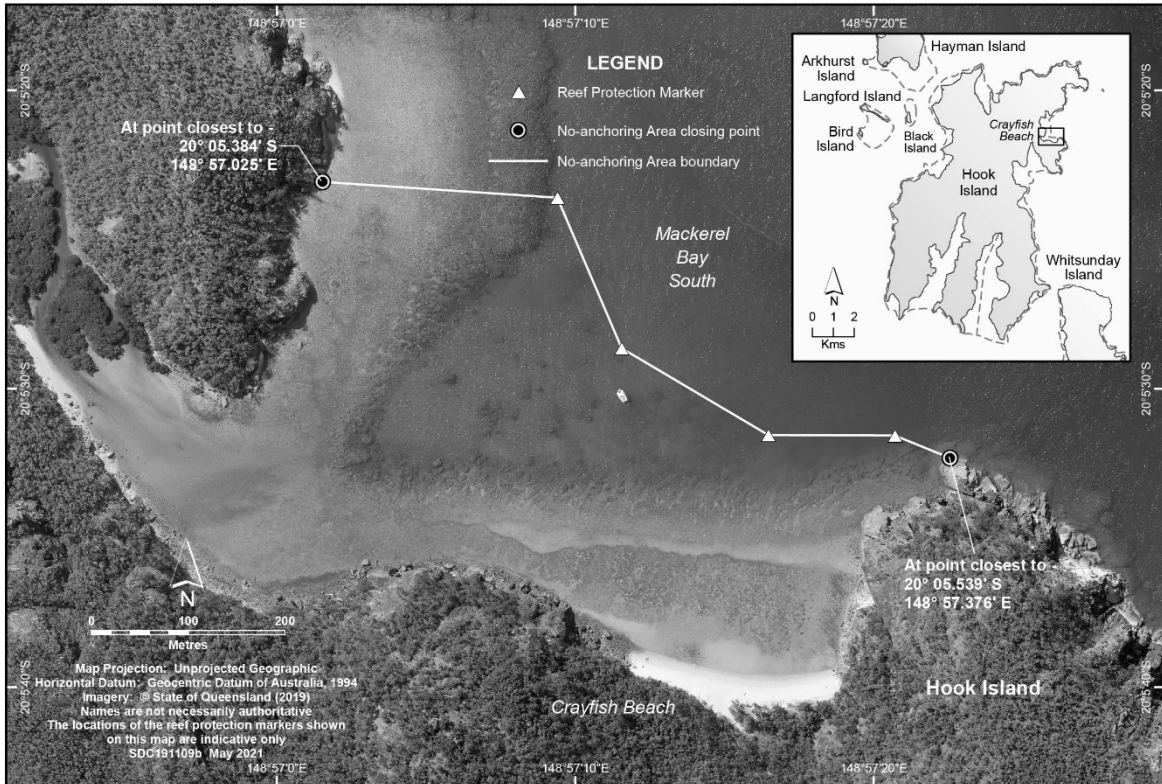
3g — Luncheon Bay and Manta Ray Bay, Hook Island



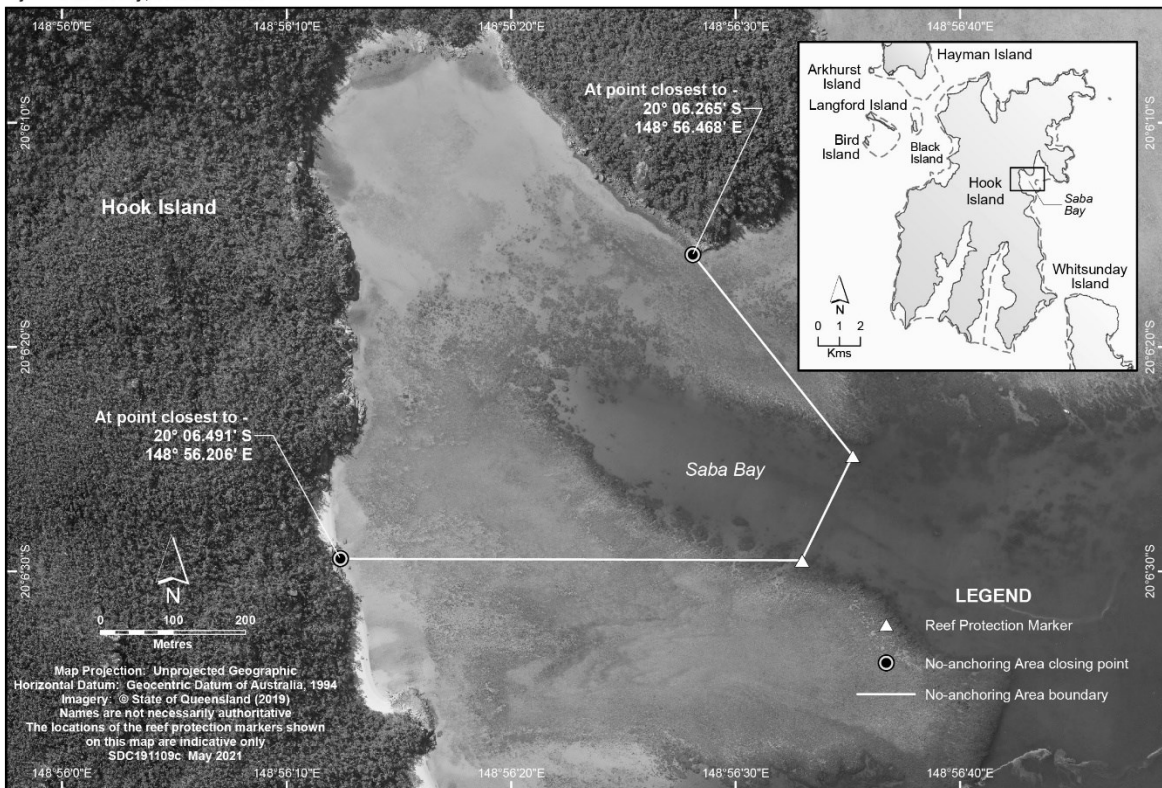
3h — Pinnacle Bay, Hook Island



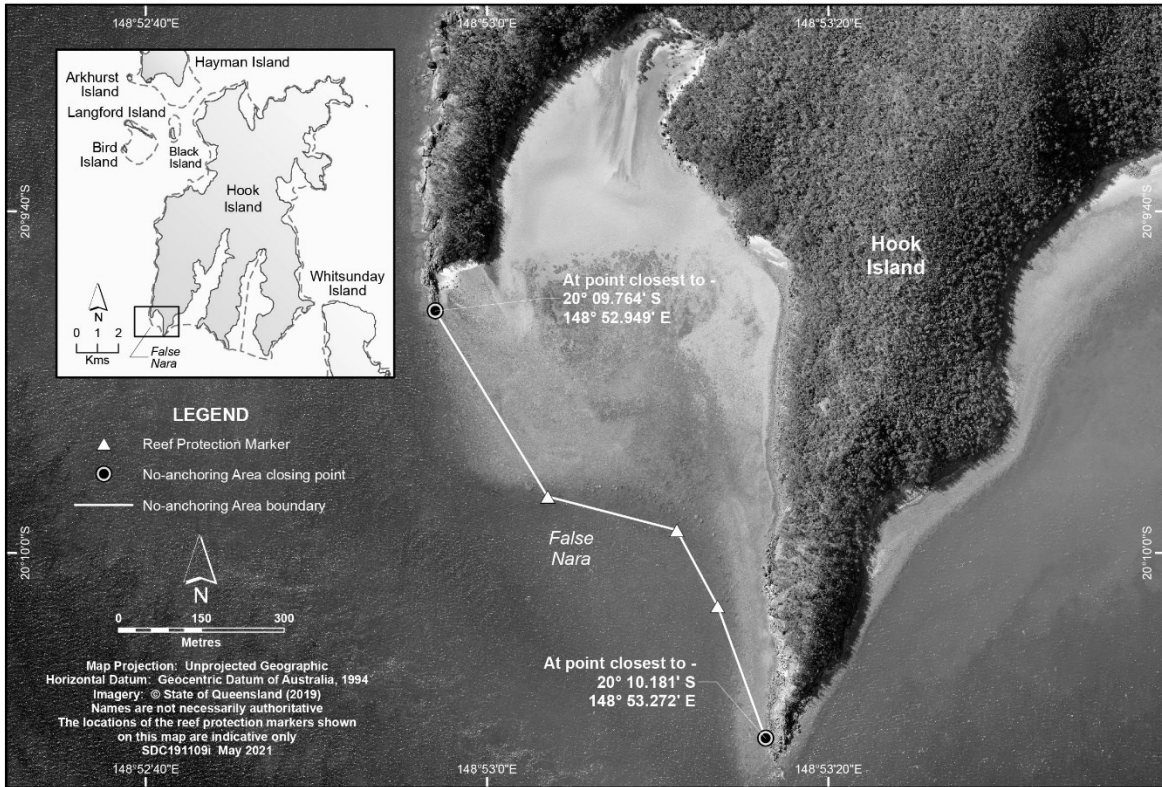
3i — Crayfish Beach — Mackerel Bay South, Hook Island



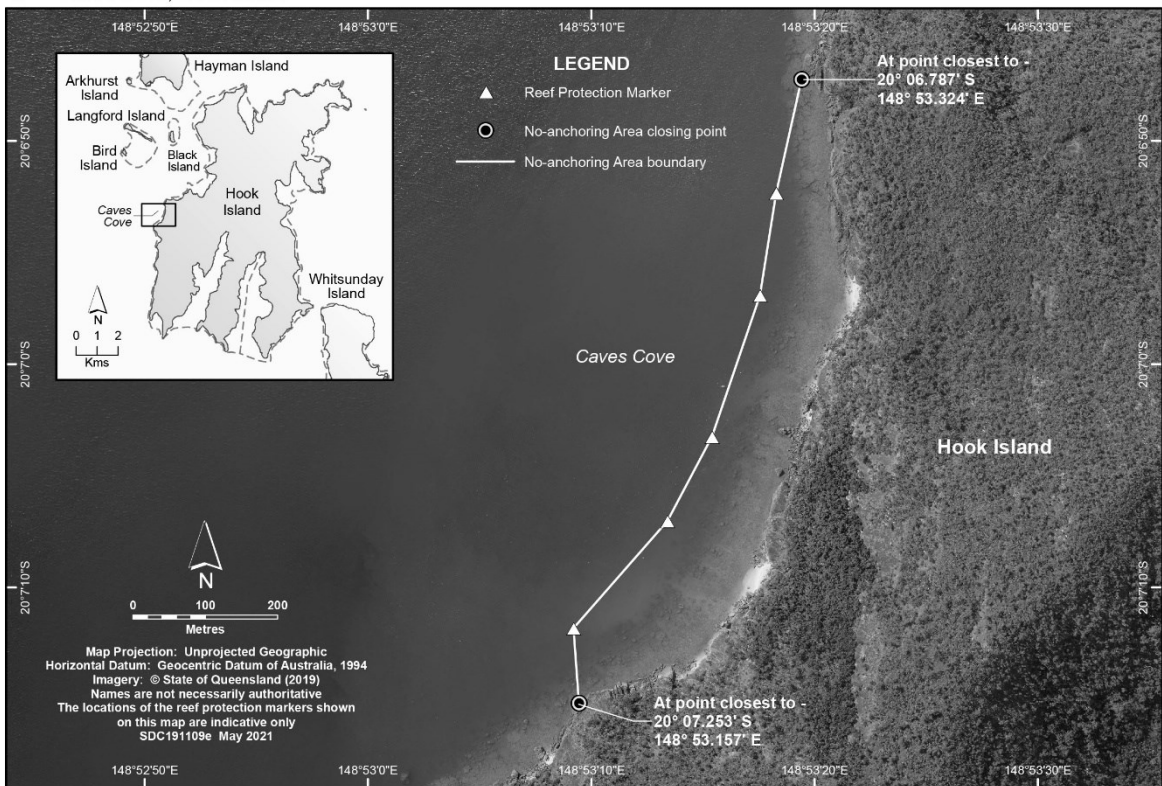
3j — Saba Bay, Hook Island



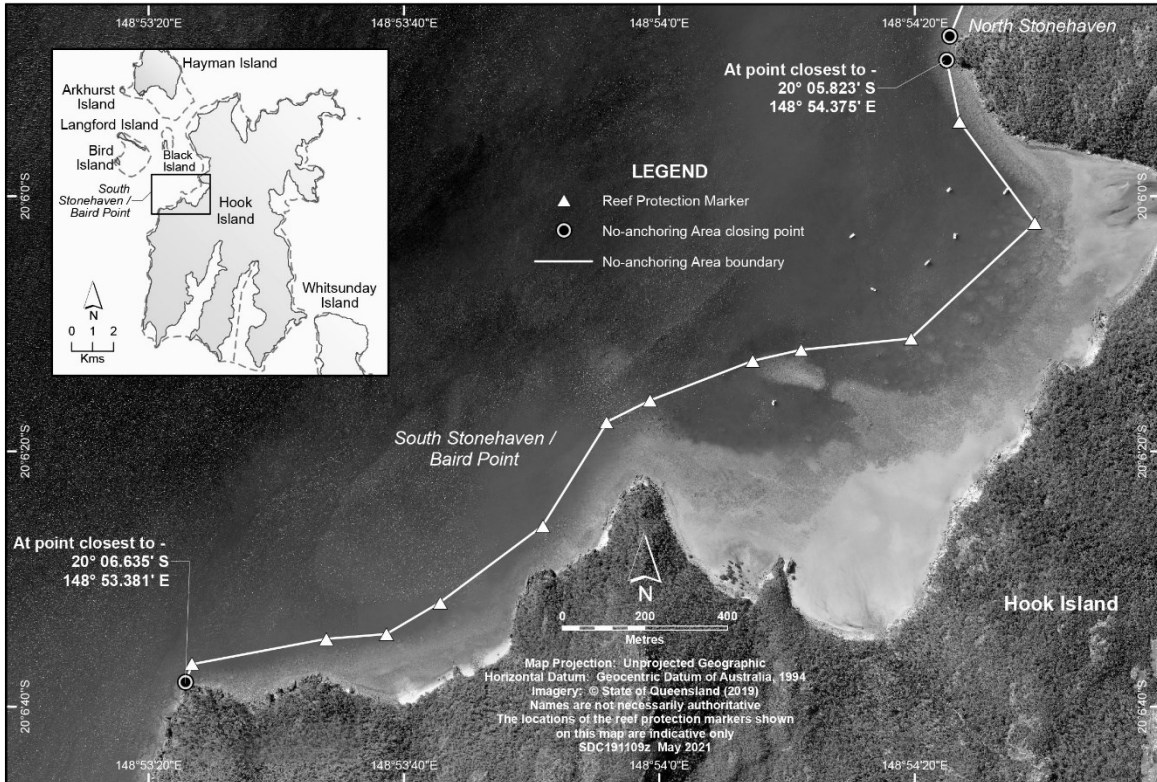
3k — False Nara, Hook Island



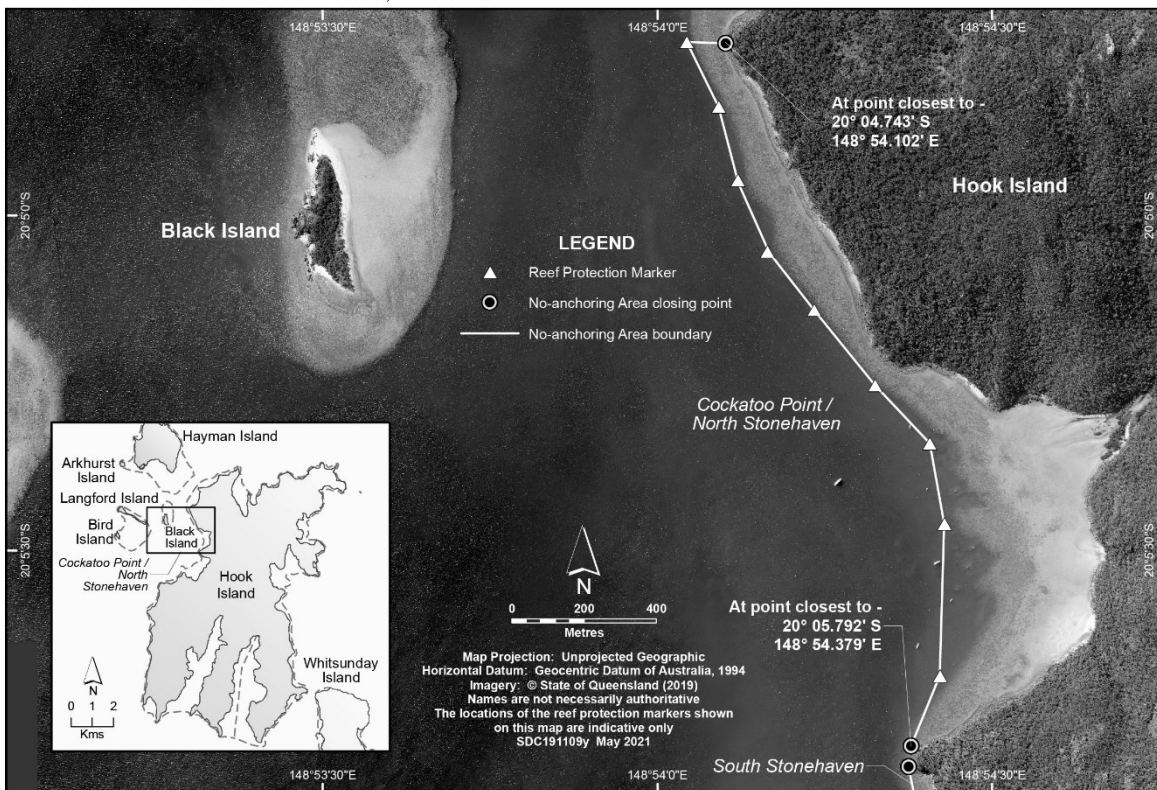
3l — Caves Cove, Hook Island



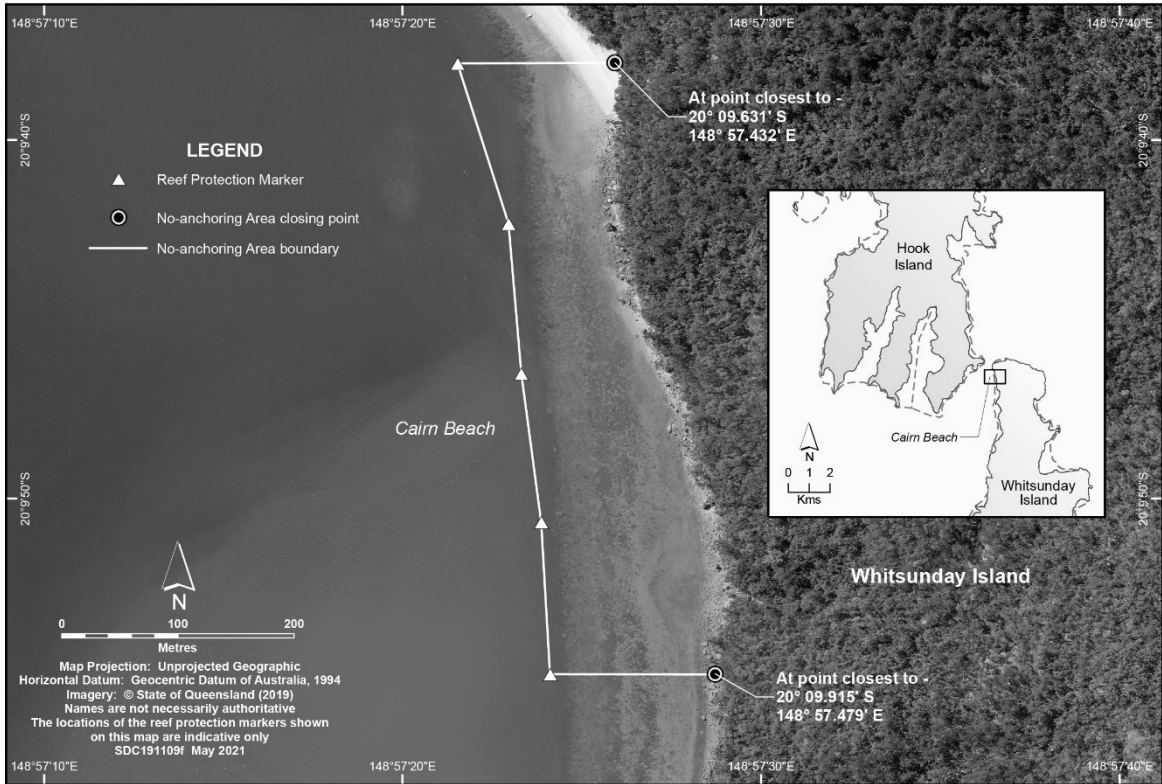
3m — South Stonehaven / Baird Point, Hook Island



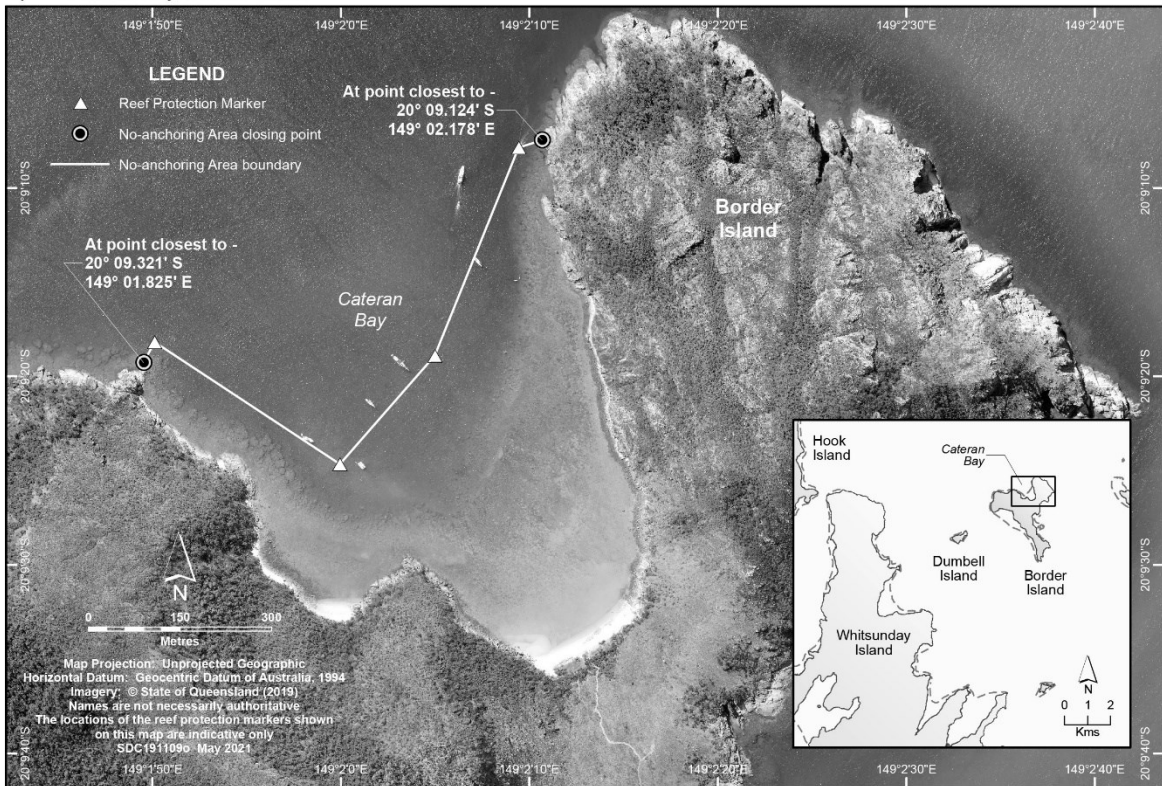
3n — Cockatoo Point / North Stonehaven, Hook Island



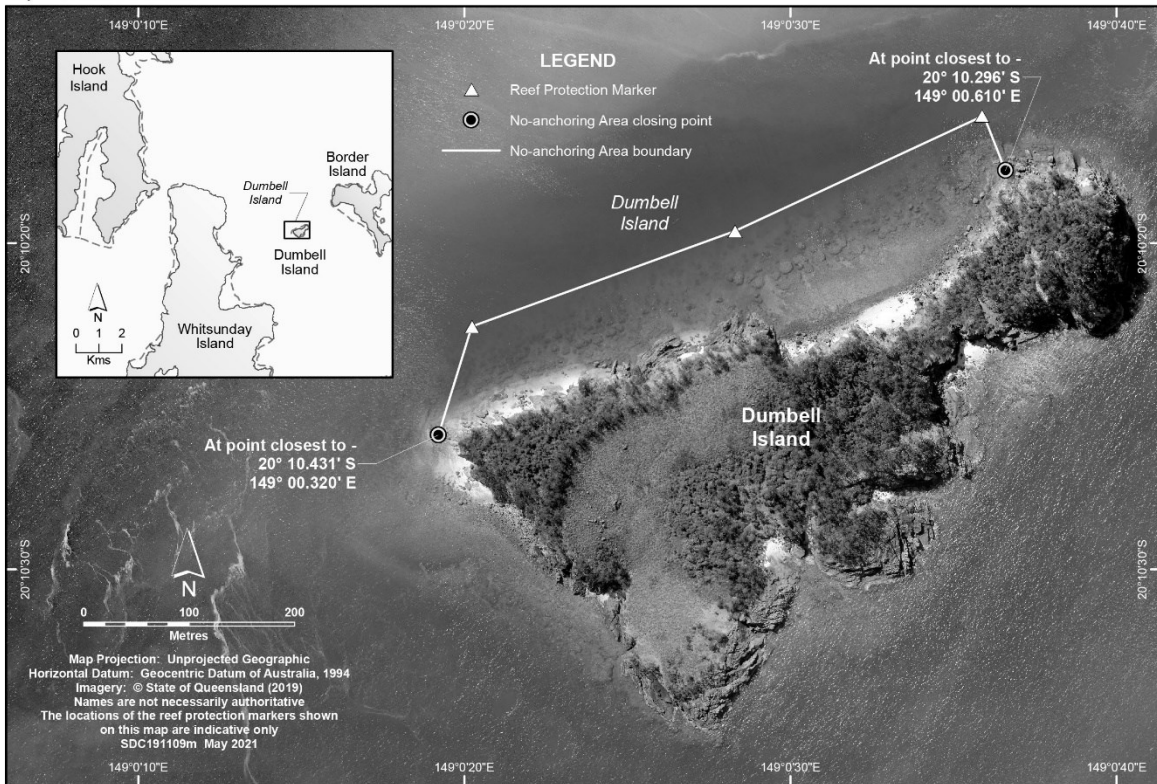
3o — Cairn Beach, Whitsunday Island



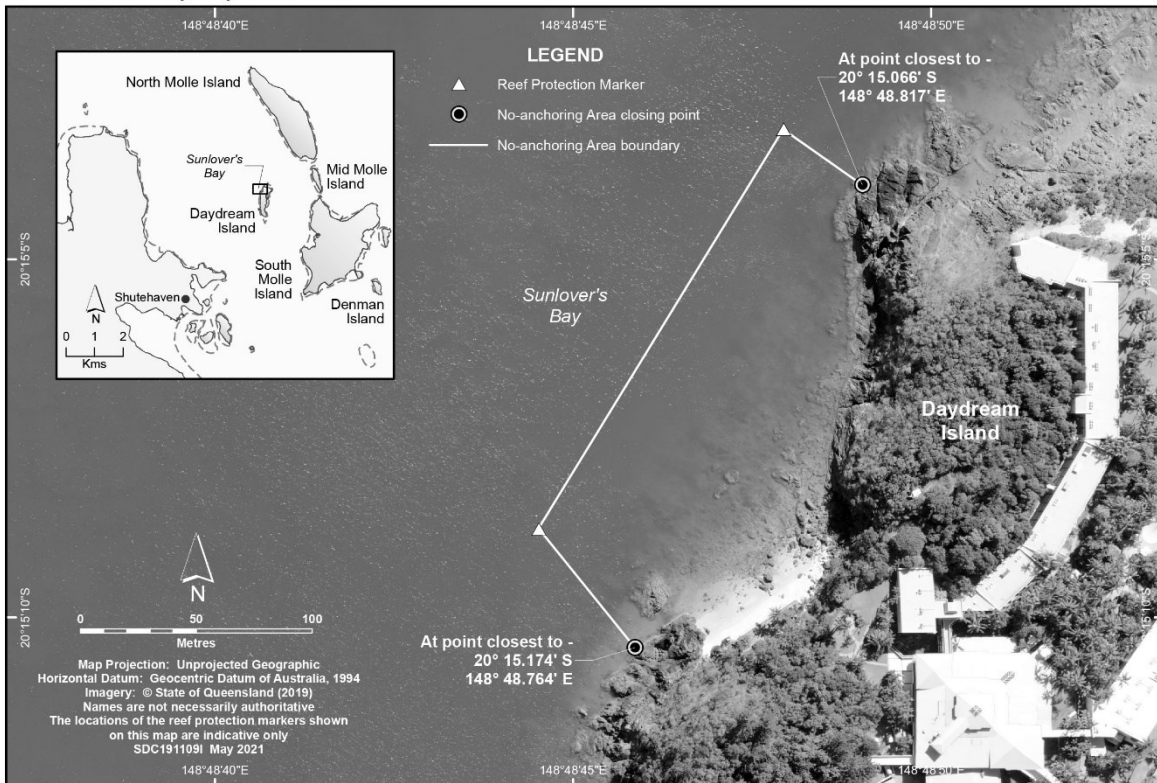
3p — Cateran Bay, Border Island



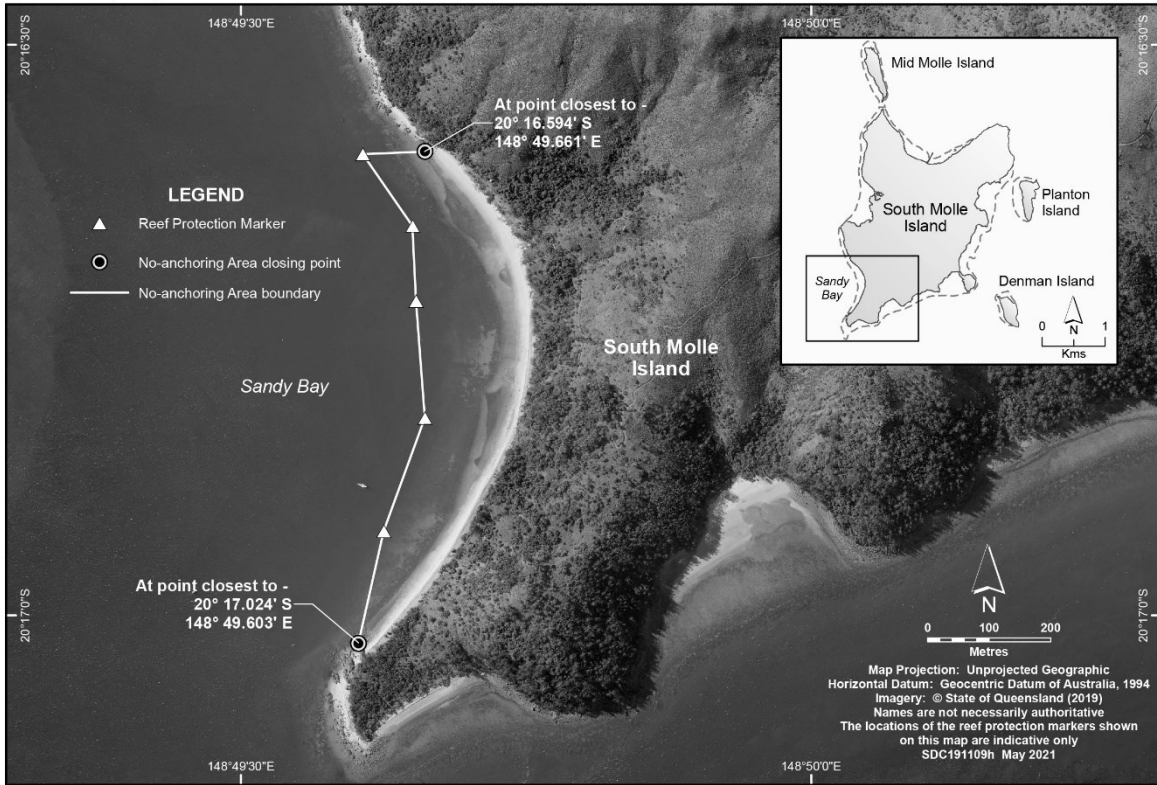
3q — Dumbell Island



3r — Sunlover's Bay, Daydream Island



3s — Sandy Bay, South Molle Island



3t — Chalkies Beach, Haslewood Island

